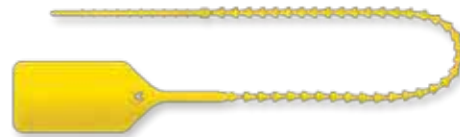
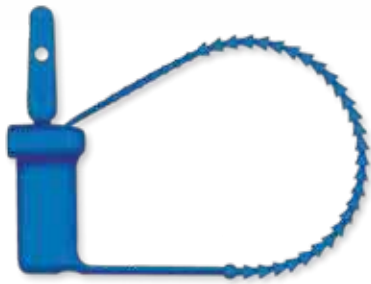


# SONITA MEDIC SURGICAL SUPPLIES

## Instruments & Instrument Care Solutions



[www.sonitamedic.com.au](http://www.sonitamedic.com.au)

■ EMAIL: [customers@sonitamedic.com.au](mailto:customers@sonitamedic.com.au)

■ PHONE: 1800 SONITA (766 482)

■ MOBILE: 0423 178 332

### SYDNEY :

Suite 242 / 60  
Walker St, North Sydney,  
NSW 2060

### MELBOURNE :

Suite 121 / 358 Clarendon St,  
South Melbourne,  
VIC 3205

### BRISBANE :

524 Old Bay Road  
Burpengary East,  
QLD 4505

### PERTH :

Suite 76 Ground Floor  
50, St Georges Terrace,  
Perth WA 6000



# Magnifying Lamps

## Maggyvue 'Ultimate' Magnifier

Wide area rectangular lens 160 x 100mm, 1.75 X magnification. Magnifier lens swivels separately to light head. Switchable illumination levels. Easy head positioning with ball joint design. Optional clip on lens for increased magnification. Supplied with heavy duty bench clamp. 3 x 9 watt fluorescent lamps. Accessories available.

Code	Description
ML100	Magnifier with bench clamp



## Standard Maggy Lamp

- Flexible Gooseneck arms
- Circular 127mm glass lens, 2x Magnification
- Robust Desk Model
- Supplied with 22 watt daylight tube
- Made in Australia

Code	Description
ML201	Maggy Lamp



## Clear View Stand Magnifier

Ideal for hands free viewing in:

- Education • Hobbies • Inspection • Reading

Code	Description
ML1025	Clear view stand



## Okolux Mobil Pocket Magnifiers

Compact pocket size. Low battery consumption. High intensity LED. Easy portability.

Code	Description
ML1224	Pocket magnifier 4 x (ø70mm) lens
ML1226	Pocket magnifier 6 x (ø55mm) lens
ML1228	Pocket magnifier 8 x (ø35mm) lens
ML1230	Pocket magnifier 10 x (ø35mm) lens



Black



White



Blue



Green



Teal



Red



Yellow



Grey



Purple



Lime Green



Neon Pink



Magenta



Neon Orange



KS096



KS106

# Universal Scissors

All-purpose scissors with stainless steel blades, ideal for cutting casts, bandages, tubing, drapes, etc. Brightly coloured handles for easy identification and organisation. Autoclavable.

## Small Universal Scissors – 16.5cm – Each

Code No.	Colour
KS090	Black
KS091	White
KS092	Blue
KS093	Green
KS093T	Teal
KS094	Red
KS095	Yellow
KS096	Grey
KS097	Purple
KS098	Lime Green
KS099N	Neon Pink
KS065	Magenta
KS066	Neon Orange

## Standard Universal Scissors – 19cm – Each

Code No.	Colour
KS100	Black
KS101	White
KS102	Blue
KS103	Green
KS103T	Teal
KS104	Red
KS105	Yellow
KS106	Grey
KS107	Purple
KS108	Lime Green
KS109	Neon Pink
KS165	Magenta
KS166	Neon Orange

PRODUCTS SHOWN AT APPROXIMATELY 50% SIZE  
COLOUR SWATCHES ARE REPRESENTATIONAL ONLY

# Wire Clamps

## Towel Utility Clip – 25/pkt

Multi-purpose disposable utility clamp. Secures catheter, intravenous, drainage and suction tubes, electrosurgical cords, etc. Ideal for anaesthesia or bedside application. Bright colour contrasts with drapes. Non-sterile. Autoclavable. Supplied in packs of 25.

Code No.	Size
KS385	100mm



KS385

## Grip Clip – 100/pkt

Disposable clip designed to secure Bovie wires and suction tubing to sterile drape area. Made of Delrin 500 Plastic with no metal parts. Latex-free. Non-sterile. Autoclavable.

Code No.	Size
KS365	75mm



KS365

PRODUCTS SHOWN AT APPROXIMATELY 30% SIZE

# Surgical Hand Immobilisers

The NEW alternative to 'lead hands'. Made from aluminium and available either reusable or disposable, these hand immobilisers are lead-free, latex-free and x-ray compatible. Durable, reusable, can be machine washed with care and autoclaved. Full details available.

## Durahands (Reusable) – Each

Code No.	Size
ISI-DH-225	Large (240 x 215mm)
ISI-DH-350	Extra Large (330 x 265mm)



ISI-DH-225

ISI-760

## Aluminium Hand (Single-use)

Supplied sterile.

Code No.	Qty	Size
ISI-760	4/box	Large (240 x 215mm)
ISI-761	3/box	Extra Large (330 x 265mm)

PRODUCTS SHOWN AT APPROXIMATELY 50% SIZE



# Enzymatic Transport Foam

## ET (Enzymatic Transport) Foam

Code	Description	Unit
ET20098	Enzymatic Transport Foam	Ctn/4 x 1L

E.T. (Enzymatic Transport) Foam is specially formulated to use on instruments during transportation and prior to processing. Simply spray E.T. Foam on the instruments to keep them moist and to initiate self cleaning prior to processing. The combination of powerful enzymes, surfactants and detergents enable E.T. Foam to quickly and efficiently dissolve blood, tissue, mucus and other protein-rich bioburden. E.T. Foam bubbles up preventing spills and splashes that are common with liquids during instrument transportation. E.T. Foam is perfect for use in surgery, central processing and other areas where immediate cleaning is not readily available.



4

# Cleaning Solutions

## Omni-zyme<sup>3</sup>

Code	Description	Unit
OM20095	Triple Enzyme Instrument Cleaner	2x4L

Omni-zyme is a powerful triple enzyme cleaning concentrate which is fully effective against the protein, lipid, carbohydrate and mucopolysaccharide debris which accumulate on surgical instruments. Omni-zyme has a neutral pH, is non-corrosive and compatible with most metals, plastics and rubber. Omni-zyme is specially formulated for use in Ultrasonic Cleaners but is fully effective in pre-soaking instruments prior to hand or machine cleaning, linen soak for stain removal, mechanical processors and endoscope processing. Recommended dilution is 30ml per 4 litres of water, making Omni-zyme a cost effective triple enzyme cleaning solution.





CB20018



CB20010 / CB20019



CB20011



CB20013 / CB20020



CB20014



CB20016



CB20021



CB20022 / CB20024 / CB20029

PRODUCTS SHOWN AT APPROXIMATE SIZE

# Cleaning Brushes

## Verres Needle Cleaning Brush – 3/pkt

Code	Total Length	Bristle Ø x Length	Colour Coded
CB20018	185mm	1.7 x 15	Red

## 2.0mm Instrument Cleaning Brush – 3/pkt

Code	Total Length	Bristle Ø x Length	Colour Coded
CB20010	220mm	2.0 x 25	White
CB20019	300mm	2.0 x 25	Red

## 2.5mm Instrument Cleaning Brush – 3/pkt

Code	Total Length	Bristle Ø x Length	Colour Coded
CB20011	220mm	2.5 x 25	Blue

## 3.0mm Instrument Cleaning Brush – 3/pkt

Code	Total Length	Bristle Ø x Length	Colour Coded
CB20013	220mm	3.0 x 25	Yellow
CB20020	300mm	3.0 x 25	White

## 3.5mm Instrument Cleaning Brush – 3/pkt

Code	Total Length	Bristle Ø x Length	Colour Coded
CB20014	220mm	3.5 x 25	Black

## 4.0mm Instrument Cleaning Brush – 3/pkt

Code	Total Length	Bristle Ø x Length	Colour Coded
CB20016	220mm	4.0 x 25	Green
CB20021	300mm	4.0 x 50	Blue

## 5.0mm Instrument Cleaning Brush – 3/pkt

Code	Total Length	Bristle Ø x Length	Colour Coded
CB20022	300mm	5.0 x 50	Green
CB20024	400mm	5.0 x 50	Green
CB20029	600mm	5.0 x 50	Green

# Cleaning Brushes

## 6.0mm Instrument Cleaning Brush – 3/pkt

Code	Total Length	Bristle Ø x Length	Colour Coded
CB20023	300mm	6.0 x 70	Black



CB20023

## 7.0mm Instrument Cleaning Brush – 3/pkt

Code	Total Length	Bristle Ø x Length	Colour Coded
CB20025	400mm	7.0 x 80	Yellow
CB20030	600mm	7.0 x 80	Yellow



CB20025 / CB20030

## 10.5mm Instrument Cleaning Brush – 3/pkt

Code	Total Length	Bristle Ø x Length	Colour Coded
CB20026	500mm	10.5 x 80	Red
CB20031	600mm	10.5 x 80	Red



CB20026 / CB20031

## 12.5mm Instrument Cleaning Brush – 3/pkt

Code	Total Length	Bristle Ø x Length	Colour Coded
CB20027	400mm	12.5 x 80	Blue



CB20027

## 3.0mm Tube Cleaning Brush – Extra Long – 3/pkt

Code	Total Length	Bristle Ø x Length	Colour Coded
CB20050	600mm	3.0 x 50	–



CB20050

## 3.5mm Tube Cleaning Brush – Extra Long – 3/pkt

Code	Total Length	Bristle Ø x Length	Colour Coded
CB20051	600mm	4.0 x 50	–



CB20051

## 3.5mm Endoscopic Cleaning Brush – 3/pkt

Code	Total Length	Bristle Ø x Length	Colour Coded
CB20054	525mm	3.5 x 25 (x5)	–



CB20054

## 3.5mm Endoscopic Cleaning Brush – 3/pkt

Code	Total Length	Bristle Ø x Length	Colour Coded
CB20070	640mm	3.5 x 25 (x5)	–



CB20070



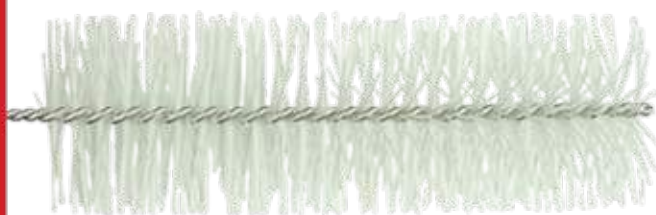


CB20035

# Cleaning Brushes

## 17mm Instrument Cleaning Brush – 3/pkt

Code	Total Length	Bristle Ø x Length	Colour Coded
CB20035	400mm	17 x 70	–



CB20036

## 25mm Tube Cleaning Brush – 3/pkt

Code	Total Length	Bristle Ø x Length	Colour Coded
CB20036	400mm	25 x 80	–

## 14mm Trach Tube Cleaning Brush – 3/pkt

Code	Total Length	Bristle Ø x Length	Colour Coded
CB20047	310mm	14 x 100	–



CB20047

## 50mm Bottle/Tube Cleaning Brush – 3/pkt

Code	Total Length	Bristle Ø x Length	Colour Coded
CB20060	300mm	50 x 150	–



CB20060

PRODUCTS SHOWN AT APPROXIMATE SIZE

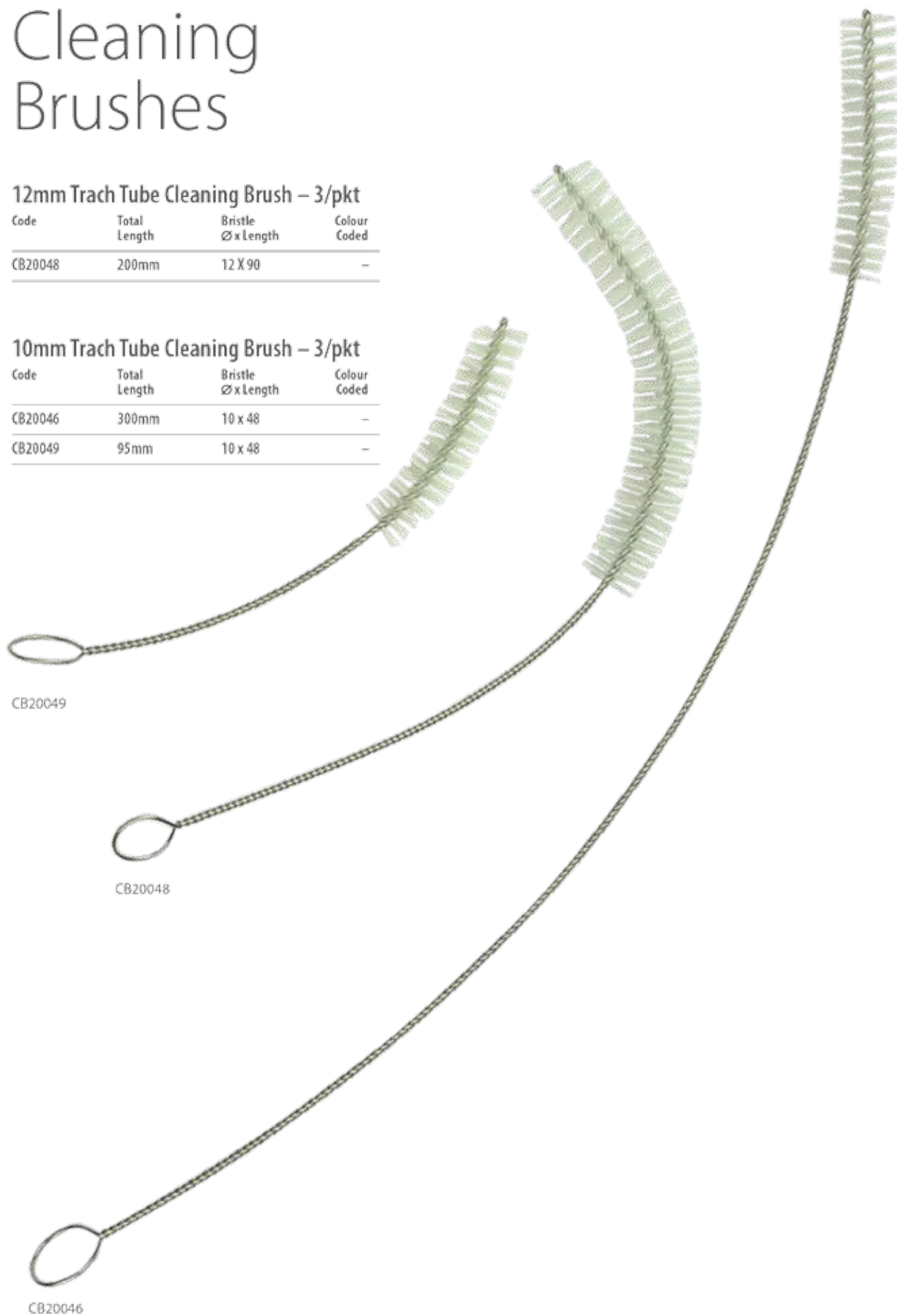
# Cleaning Brushes

## 12mm Trach Tube Cleaning Brush – 3/pkt

Code	Total Length	Bristle Ø x Length	Colour Coded
CB20048	200mm	12 X 90	-

## 10mm Trach Tube Cleaning Brush – 3/pkt

Code	Total Length	Bristle Ø x Length	Colour Coded
CB20046	300mm	10 x 48	-
CB20049	95mm	10 x 48	-



CB20049

CB20048

CB20046

PRODUCTS SHOWN AT APPROXIMATE SIZE

# Cleaning Brushes



CB20043

## General Cleaning Brush – Nylon – 3/pkt

Code	Bristles	Handle Material
CB20043	Nylon	Plastic



CB20038

## General Cleaning Brush – Stainless Steel – 3/pkt

Code	Bristles	Handle Material
CB20038	Stainless Steel	Plastic



CB20045

## Double-ended Cleaning Brush – Nylon – 3/pkt

Code	Bristles	Handle Material
CB20045	Nylon	Plastic



CB20032

## Double-ended Cleaning Brush – Nylon – 3/pkt

Code	Bristles	Handle Material
CB20032 (8mm/6mm)	Nylon	Wire



CB20044

## General Cleaning Brush – Nylon – 3/pkt

Code	Bristles	Handle Material
CB20044	Nylon	Wood



CB20039

## General Cleaning Brush – Stainless Steel – 3/pkt

Code	Bristles	Handle Material
CB20039	Stainless Steel	Wood

PRODUCTS SHOWN AT APPROXIMATELY 50% SIZE

# TOOTHBRUSH -STYLE CLEANING BRUSHES

Sturdy plastic handle with nylon, copper, brass or stainless steel bristles.

Nylon bristles are embedded with an antimicrobial agent which prevents the growth of bacteria, mold and yeast on the surface of the bristles. Soft & hard brushes available for different purpose of use. Latex-free. Pack of 2, 3 or 10.



• FBC5-T001



• FBC5-T002



• FBC5-D02



• FBC5-D03



• S-2121



• D-2100BN



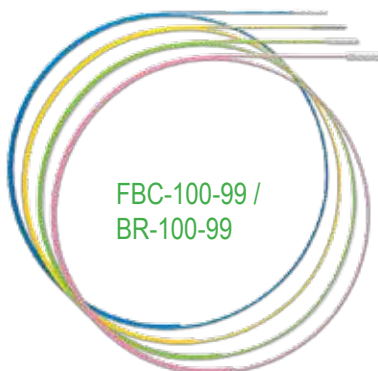
• D-2100SN

Code	Description	Length
• <b>FBC5-T001</b>	Brass	18cm (7")
• <b>FBC5-T002</b>	Copper	18cm (7")
• <b>FBC5-D02</b> (Soft / Hard )	Double-ended, Nylon	18cm (7")
• <b>FBC5-D03</b>	Double-ended, Nylon	18cm (7")
• <b>S-2121</b>	Double-ended, Stainless Steel	18cm (7")
• <b>D-2100BN</b>	Double-headed, Brass, Nylon	18cm (7")
• <b>D-2100SN</b>	Double-headed, Stainless Steel, Nylon	18cm (7")
• <b>FBC5-KIT</b>	<b>3 Piece kit</b> Nylon, Cooper & Stainless Steel	18cm (7")

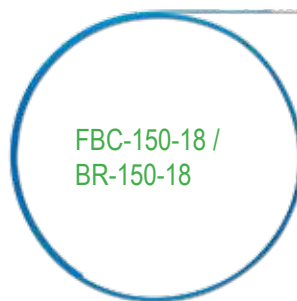


• FBC5-KIT

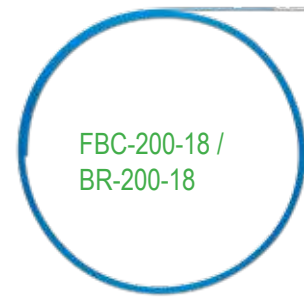
# SCOPE CLEANING BRUSHES



FBC-100-99 /  
BR-100-99



FBC-150-18 /  
BR-150-18



FBC-200-18 /  
BR-200-18



• FBC-150-18 / BR-150-18

• FBC-150-24 / BR-150-24

• FBC-150-32 / BR-150-32

• FBC-150-42 / BR-150-42



• FBC-200-18 / BR-200-18

• FBC--200-24 / BR-200-24

• FBC-200-32 / BR-200-32

• FBC-200-42 / BR-200-42

MEDICAL

■ PHONE:

1800 SONITA (766 482)

■ MOBILE:

0423 178 332

SONITA MEDIC

SURGICAL

■ EMAIL: [customers@sonitamedic.com.au](mailto:customers@sonitamedic.com.au)

■ WEB: [www.sonitamedic.com.au](http://www.sonitamedic.com.au)

SUPPLIES

■ OFFICE's in:

• SYDNEY

• MELBOURNE

• BRISBANE

• PERTH



# Round Caps

## 1.6mm Round Instrument Protection Cap

– 100/pkt

Code	Description	Size (Ø x Length)
KS30101	Round Cap white-solid	1.6 x 19.1mm
KS30201	Round Cap white-tint	1.6 x 19.1mm
KS30301	Round Cap clear	1.6 x 19.1mm
KS30401	Round Cap clear with vents	1.6 x 19.1mm
KS30801	Round Cap white-tint with vents	1.6 x 19.1mm



KS30101



KS30201



KS30301



KS30401



KS30801

## 2.0mm Round Instrument Protection Cap

– 100/pkt

Code	Description	Size (Ø x Length)
KS30102	Round Cap blue-solid	2.0 x 19.1mm
KS30202	Round Cap blue-tint	2.0 x 19.1mm
KS30302	Round Cap clear	2.0 x 19.1mm
KS30402	Round Cap clear with vents	2.0 x 19.1mm
KS30802	Round Cap blue-tint with vents	2.0 x 19.1mm



KS30102



KS30202



KS30302



KS30402



KS30802

## 2.8mm Round Instrument Protection Cap

– 100/pkt

Code	Description	Size (Ø x Length)
KS30103	Round Cap green-solid	2.8 x 19.1mm
KS30203	Round Cap green-tint	2.8 x 19.1mm
KS30303	Round Cap clear	2.8 x 19.1mm
KS30403	Round Cap clear with vents	2.8 x 19.1mm
KS30803	Round Cap green-tint with vents	2.8 x 19.1mm



KS30103



KS30203



KS30303



KS30403



KS30803

## 3.2mm Round Instrument Protection Cap

– 100/pkt

Code	Description	Size (Ø x Length)
KS30104	Round Cap red-solid	3.2 x 25.4mm
KS30204	Round Cap red-tint	3.2 x 25.4mm
KS30304	Round Cap clear	3.2 x 25.4mm
KS30404	Round Cap clear with vents	3.2 x 25.4mm
KS30804	Round Cap red-tint with vents	3.2 x 25.4mm



KS30104



KS30204



KS30304



KS30404



KS30804

All Caps are: Radiopaque, Disposable, Latex-free, Steam-sterilisable, 100 caps per pack.

PRODUCTS SHOWN AT APPROXIMATE SIZE

MEDICAL

PHONE:

1800 SONITA (766 482)

MOBILE:

0423 178 332

SONITA MEDIC SURGICAL

EMAIL: [customers@sonitamedic.com.au](mailto:customers@sonitamedic.com.au)

WEB: [www.sonitamedic.com.au](http://www.sonitamedic.com.au)

SUPPLIES

OFFICE's in:

• SYDNEY

• MELBOURNE

• BRISBANE

• PERTH



KS30311



KS30411



KS30811



KS30312



KS30412



KS30812



KS30313



KS30413



KS30813



KS30315



KS30415



KS30815

# Osteotome Caps

## 6.4mm Osteotome Protection Cap – 100/pkt

Code	Description	Size (Width x Length)
KS30311	Flat Cap clear	6.4 x 19.1mm
KS30411	Flat Cap clear with vents	6.4 x 19.1mm
KS30811	Flat Cap white-tint with vents	6.4 x 19.1mm

## 9.5mm Osteotome Protection Cap – 100/pkt

Code	Description	Size (Width x Length)
KS30312	Flat Cap clear	9.5 x 25.4mm
KS30412	Flat Cap clear with vents	9.5 x 25.4mm
KS30812	Flat Cap blue-tint with vents	9.5 x 25.4mm

## 12.7mm Osteotome Protection Cap – 100/pkt

Code	Description	Size (Width x Length)
KS30313	Flat Cap clear	12.7 x 25.4mm
KS30413	Flat Cap clear with vents	12.7 x 25.4mm
KS30813	Flat Cap green-tint with vents	12.7 x 25.4mm

## 19.1mm Osteotome Protection Cap – 100/pkt

Code	Description	Size (Width x Length)
KS30315	Flat Cap clear	19.1 x 25.4mm
KS30415	Flat Cap clear with vents	19.1 x 25.4mm
KS30815	Flat Cap yellow-tint with vents	19.1 x 25.4mm

All Caps are: Radiopaque. Disposable. Latex-free. Steam-sterilisable.

PRODUCTS SHOWN AT APPROXIMATE SIZE

# Osteotome Caps

## 25.4mm Osteotome Protection Cap – 100/pkt

Code	Description	Size (Width x Length)
KS30309	Flat Cap clear	25.4 x 25.4mm
KS30409	Flat Cap clear with vents	25.4 x 25.4mm
KS30809	Flat Cap black-tint with vents	25.4 x 25.4mm



KS30309

## 31.8mm Osteotome Protection Cap – 100/pkt

Code	Description	Size (Width x Length)
KS30417	Flat Cap clear with vents	31.8 x 31.8mm
KS30817	Flat Cap purple-tint with vents	31.8 x 31.8mm



KS30417



KS30817

## 38.1mm Osteotome Protection Cap – 100/pkt

Code	Description	Size (Width x Length)
KS30418	Flat Cap clear with vents	38.1 x 38.1mm
KS30818	Flat Cap red-tint with vents	38.1 x 38.1mm



KS30418



KS30818

## 44.5mm Osteotome Protection Cap – 100/pkt

Code	Description	Size (Width x Length)
KS30419	Flat Cap clear with vents	44.5 x 31.8mm
KS30819	Flat Cap orange-tint with vents	44.5 x 31.8mm



KS30419



KS30819

All Caps are: Radiopaque. Disposable. Latex-free. Steam-sterilisable.  
100 caps per pack.



KS30419



KS30819

PRODUCTS SHOWN AT APPROXIMATE SIZE

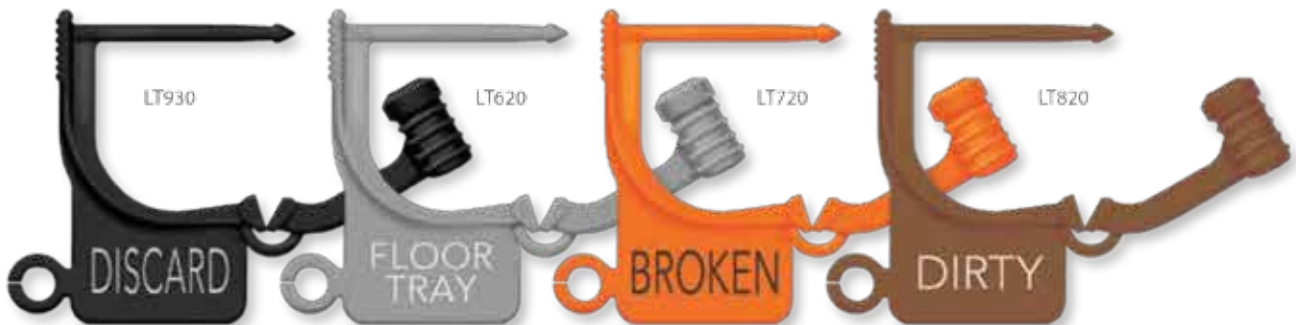
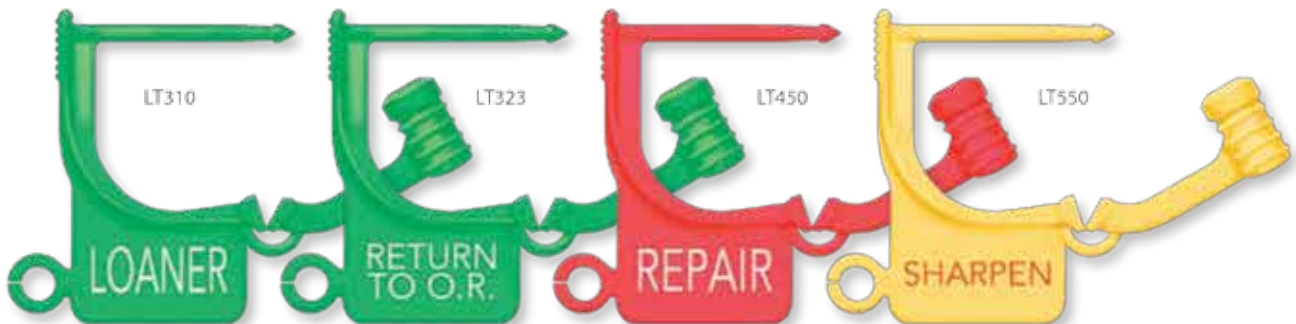


# Locking Tags

## Preprinted Locking Tags – 100/pkt

Code	Description	Colour
LT130	PULL SET FOR SERVICE	White
LT150	CLEAN	White
LT210	QUICK TURNOVER	Blue
LT220	SHORT	Blue
LT310	LOANER	Green
LT323	RETURN TO O.R.	Green
LT450	REPAIR	Red
LT550	SHARPEN	Yellow
LT930	DISCARD	Black
LT620	FLOOR TRAY	Grey
LT720	BROKEN	Orange
LT820	DIRTY	Brown

All tags are: Tamper-resistant. Non-sterile. Autoclavable. Latex free. 25mm long. Coloured and numbered locking tags also available.



PRODUCTS SHOWN AT APPROXIMATE SIZE

MEDICAL

PHONE:

1800 SONITA (766 482)

MOBILE:

0423 178 332

SONITA MEDIC

SURGICAL

EMAIL: [customers@sonitamedic.com.au](mailto:customers@sonitamedic.com.au)

WEB: [www.sonitamedic.com.au](http://www.sonitamedic.com.au)

SUPPLIES

OFFICE's in:

. SYDNEY

. MELBOURNE

. BRISBANE

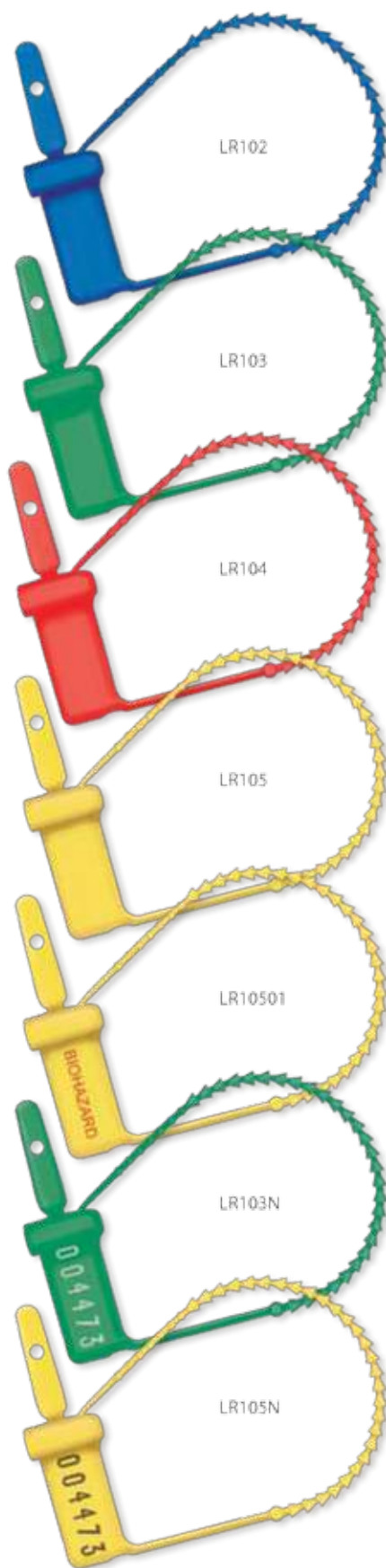
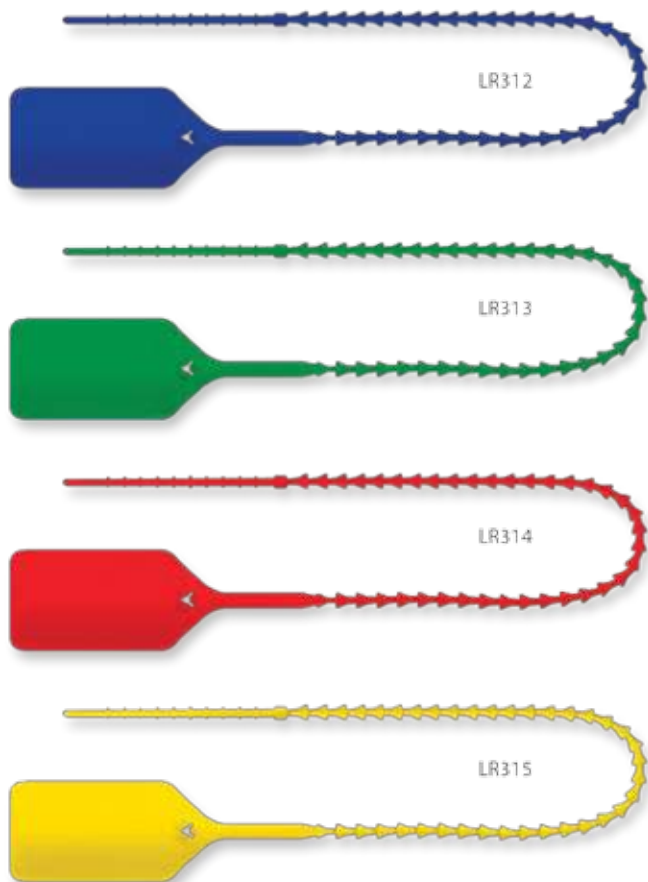
. PERTH

# Breakaway Tags

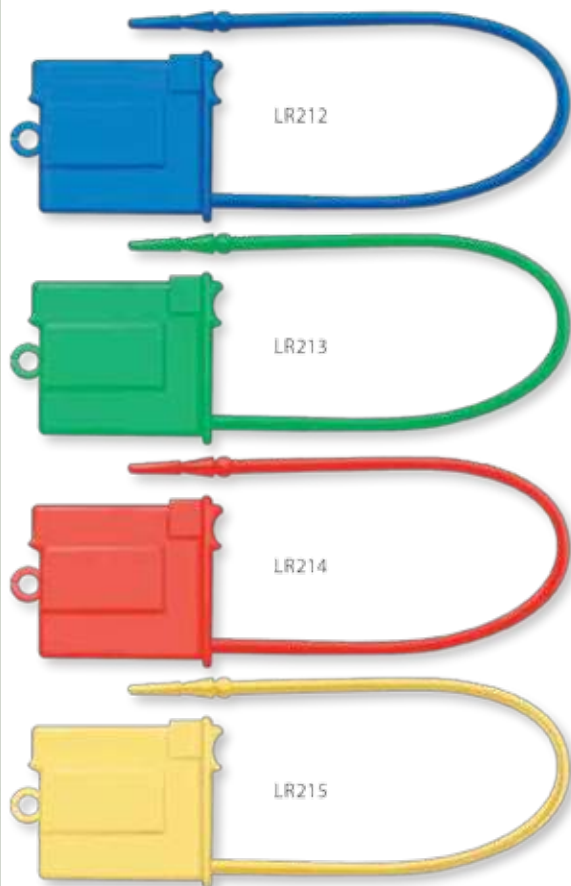
## Breakaway Tags – 100/pkt

Code	Description	Colour
LR102	Breakaway Tag	Blue
LR103	Breakaway Tag	Green
LR104	Breakaway Tag	Red
LR105	Breakaway Tag	Yellow
LR10501	Breakaway Tag - BIOHAZARD	Yellow
LR103N	Breakaway Tag Sequentially numbered	Green
LR105N	Breakaway Tag Sequentially numbered	Yellow
LR312	Breakaway Tag (Thin style)	Blue
LR313	Breakaway Tag (Thin style)	Green
LR314	Breakaway Tag (Thin style)	Red
LR315	Breakaway Tag (Thin style)	Yellow

Tags cinch closed until tight and must be cut to open, providing a secure lock. Tamper-resistant with 'SEALED' indication on reverse. Non-sterile. Autoclavable. Latex-free.



PRODUCTS SHOWN AT APPROXIMATELY 70% SIZE



PRODUCTS SHOWN AT APPROXIMATE SIZE

# Padlock Tags

## Padlock Tags – 100/pkt

Code	Title	Colour
LR212	Padlock Tag	Blue
LR213	Padlock Tag	Green
LR214	Padlock Tag	Red
LR215	Padlock Tag	Yellow

Longer and thinner locking shaft is ideal for difficult-to-lock trays. Lock is easily broken by hand, no cutting needed. Non-sterile. Latex-free. Autoclavable. 125mm overall length. 100 tags per package.

# Smart Tags

## Write-on Smart Tags – 50/pkt

Code	Description	Colour
ST0009	Smart tag – blank	Black
ST0102	Smart tag – VENDOR	Blue
ST0203	Smart tag – LOANER	Green
ST0304	Smart tag – PRIORITY	Red
ST0405	Smart tag – RE-RUN	Yellow
ST0507	Smart tag – BROKEN	Orange

Durable, lockable tags are barcoded and have tear-off barcode for additional tracking. Identify and record specific instructions on these one piece versatile tags. Each package contains: 50 tags and 1 x lab marker whose ink is autoclavable, waterproof and alcohol resistant. Non-sterile. Autoclavable. Tamper-resistant. Latex-free. Tags are approximately 51 x 140mm.



OTHER STYLES AVAILABLE (NOT TO SCALE)



PRODUCT SHOWN AT APPROXIMATE SIZE

# Write-on Tags



## Write-on Tags – 100/pkt

Code	Description	Colour
WT0009	BLANK	Black
WT0102	VENDOR	Blue
WT0203	LOANER	Green
WT0304	PRIORITY	Red
WT0405	RE-RUN	Yellow
WT0507	BROKEN (two-sided)	Orange

Identify and record specific instructions with these versatile tags. 'BROKEN' tag has room for additional information on reverse side.

Each package contains: 100 tags, 100 ties and 1 x lab marker whose ink is autoclavable, waterproof and alcohol resistant. Non-sterile. Tamper Resistant. Latex-free. Tag size: 75 x 125mm.

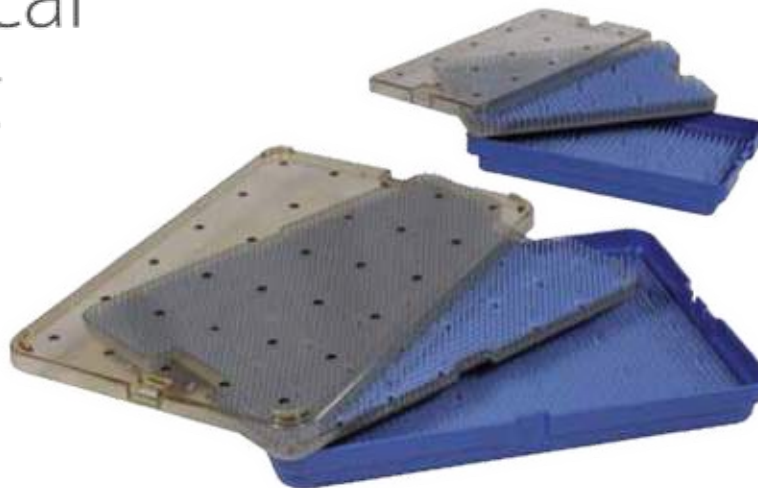


## Lab Markers & Ties

Code	Description	Colour
RT100P	Lab Marker as supplied with tags	Black Pkt/50
RT100T	150mm Ties as supplied with tags	White Pkt/1000



# Microsurgical Instrument Trays



## Instrument protection in a complete range of sizes

MicroPak® instrument trays are designed for use with a wide variety of microsurgical and other delicate instruments. These durable, lightweight plastic trays are engineered for maximised protection and ease of handling, with transparent lids for quick instrument identification. Made of rugged, 'state-of-the-art' plastic polymers, the MicroPak is compatible for use with the majority of sterilisation methods currently available.

### MicroPak®

Cat#	Description	Dimensions mm (WxLxD)
0100	Base & Lid	40.6x66.0x12.7
0101	Base, Lid & Mat	40.6x66.0x12.7
0111	Base, Lid & Mat	50.8x152.4x19.1
0112	Base, Lid & Mat	63.5x246.4x25.4
0126	Base, Lid & Silicone Bars (1 diamond knife)	50.8x152.4x19.1
0127	Base, Lid & Silicone Bars (2 diamond knife)	50.8x152.4x19.1
0128	Base, Lid & Silicone Bars (3 diamond knife)	76.2x152.4x19.1
0211	Base, Lid & Silicone Mat	76.2x152.4x19.1
1010	Base, Lid	152.4x254x19.1
1011	Base, Lid & Silicone Mat	152.4x254x19.1
1015	Base, Lid & Mat	139.7x241.3x63.5
1020	Base, Lid	152.4x254x38.1
1021	Base, Lid, Insert Tray & 2 Mats	152.4x254x38.1
1023	Base, Lid, Insert Tray & 1 Insert Mat	152.4x254x38.1
1025	Base, Lid & Mat	152.4x254x38.1
2011	Base, Lid & Mat	254x381x19.1
2020	Base & Lid	254x381x38.1
2021	Base, Lid, Insert Tray & 2 Mats	254x381x38.1
2023	Base, Lid, Insert Tray & 1 insert Mat	254x381x38.1
2024	Base, Lid, 1/2 Insert Tray & 2 Mats	254x381x38.1
2025	Base, Lid & Mat	254x381x38.1

# Endoscope Trays



## Protects endoscopes during transport, storage and sterilisation.

The ScopePak® offers engineered protection for the handling and storage of costly endoscopes. Available in a variety of sizes to fit a broad range of endoscopes, each tray features silicone holding bars to secure the telescope in place, and a transparent lid for easy identification. Made of rugged state-of-the-art plastic polymers, the ScopePak is engineered to withstand steam sterilization as well as ethylene oxide or cold sterilising solutions.

- **Proven Protection** - helps prevent damage to endoscopes, minimising expensive repairs
- **Secure** - endoscopes are fixed in place with unique silicone holding bars
- **Flexible** - adjustable silicone holding bars accommodate a variety of endoscope sizes
- **Durable** - engineered with tough, time-tested, highly resilient plastic polymers to withstand the rigors of repeated use and sterilisation
- **Convenient** - transparent lids allows easy identification of endoscopes
- **Versatile** - can be used with steam sterilisation, ethylene oxide and cold sterilising solutions

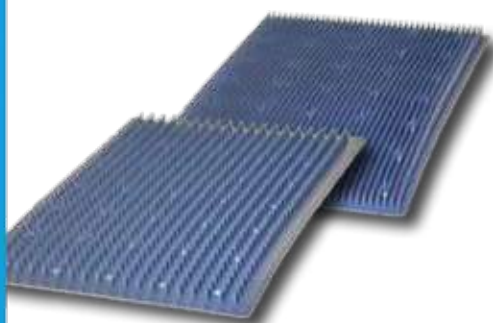
## ScopePak®

Cat#	Description	Dimensions mm (WxLxD)
9312	ScopePak®, small w/Scope Holder Sets1	76.2x281.94x33.02
9317	ScopePak®, medium w/Scope Holder Sets2	76.2x408.94x33.02
9321	ScopePak®, large w/Scope Holder Sets2	76.2x510.54x33.02
9326	ScopePak®, extra large w/Scope Holder Sets3	101.6 x660.4x71.12
9331	ScopePak®, extra long w/Scope Holder Sets3	119.38x769.62x71.12

Notes: 1. Includes 1 ea. #5350 and 1 ea. #5351 silicone scope holder  
 2. Includes 2 ea. #5350 and 1 ea. #5351 silicone scope holder  
 3. Includes 4 ea. #5353 and 2 ea. #5352 silicone scope holder  
 4. Dimensions are inside dimensions.

## Silicone Pin Mats

The Pin Mats provide a convenient method for the positioning and protection of surgical instruments during sterilisation, storage, or transport. The Soft silicone material withstands repeated autoclaving, and mats are available with or without perforations. Mats may be cut to fit existing trays or baskets. The Fine-pin Mats have closely spaced flexible pins and are recommended for micro surgical instruments. Coarse-pin Mats have medium spaced semi-rigid pins for less delicate instruments.



Part No.	Description	Dimensions mm
0030.04	Coarse Pin Mat, plain	480 x 250 x 18
0032.04 (30P)	Coarse Pin Mat, perforated	480 x 250 x 18
0031.04	Fine Pin Mat, plain	480 x 250 x 18
0033.04 (31P)	Fine Pin Mat, perforated	480 x 250 x 18

# Instrument Organising System

## The MultiPak® System comprises:

- 4 sizes of Base Units
- 8 sizes of Insert Trays
- 7 sizes of Metal Instrument Racks
- 9 sizes of Lids

MultiPak® is your unique instrument processing, handling, transport and sterilisation tray system. You can custom-configure the MultiPak to accommodate almost limitless instrument system applications. And the 'a la Carte' method of ordering lets you buy only the pieces you need. MultiPak™ is the most versatile tray system for organising and protecting delicate surgical instrumentation.

The wide array of sizes ensures the proper tray configuration for even the most complicated sets. MultiPak trays can be used alone or layered within the base tray in a variety of space saving combinations, like the versatile Insert Tray lids to fit silicone accessories. This smart design maximises instrument storage while minimising the overall size of the tray, conserving valuable storage and steriliser space. Organise your sets and reduce repair costs, all in one complete package. MultiPak's versatility allows for instrument set modifications with very little, if any, tray modifications. Engineered for use in the most popular modes of sterilisation in use today (Steam, EtO, Plasma, Cold Soaking), that meets your needs and your budget.



## Base Units and Lids

Cat#	Description	Dimensions* (WxLxD)
5000-01-475P	MultiPak Base Unit, Large	233.68x508x116.84
5000-01-375P	MultiPak Base Unit, Large	233.68x508x91.44
5000-01-275P	MultiPak Base Unit, Large	233.68x508x66.04
5000-50-000P	MultiPak Lid, for 50000 Base, Clear	246.38x520.7x43.18
5000-50-175P	MultiPak Elevated Lid, Clear	246.38x520.7x35.56
5006-01-390P	MultiPak Base Unit, Small	139.7x325.12x97.79
5000-02-000P	MultiPak Lid for 5006 Base	147.32x327.66x43.20

## Insert Trays and Lids

5006-03-150P	MultiPak Insert Tray, Small for 5006 Base	129.54x284.48x25.40
5010-03-180P	MultiPak Full Insert Tray, for 5000 Base	220.98x495.3x41.91
5010-50-000P	MultiPak Lid, for 5010 Insert	231.14505.46x43.18
5012-03-180P	MultiPak Long Insert Tray, for 5000 Base	101.6x495.3x41.91
5012-50-000P	MultiPak Lid, for 5012 Tray	109.22x505.46x43.18
5022-03-180P	MultiPak Insert Tray, for 5000 Base	220.98x241.3x41.91
5022-50-000P	MultiPak Lid, for 5022 Insert Tray, Clear	228.6x231.14x43.18
5122-03-375P	MultiPak Insert Tray, for 5000 Base, (Deep)	220.98x241.3x83.82
5022-50-175P	MultiPak Elevated Lid for 5022, or 5122 Tray	213.36x231.14x35.56
5023-03-180P	MultiPak Insert Tray, for 5000 Base	220.98x322.58x41.91
5023-50-000P	MultiPak Lid, for 5023 Tray, Clear	228.6x330.2x43.18
5123-03-375P	MultiPak Insert Tray, for 5000 Base, (Deep)	220.98x322.58x83.82
5023-50-175P	MultiPak Elevated Lid for 5023, or 5123 Insert Tray	213.36x330.2x35.56
5023-03-E	MultiPak Insert Tray, for 5000 Base	220.98x325.12x41.91
5023-50-E	MultiPak Lid for 5023-50-E, Insert Tray, Clear	223.52x332.74x43.20

\* dimensions are for the inside diameter in mm

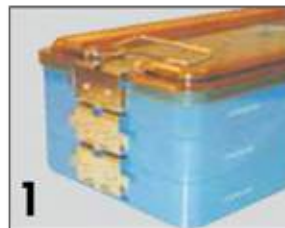
# Microsurgical Instrument Trays



## StackPak®

StackPak® is a revolutionary new way to handle, transport, organise and sterilise your delicate surgical instrumentation. The unique latch design creates a simple way to combine complex instrument sets into one neat package. It makes organisation a snap and you won't outgrow the system. Compatible for use with the majority of today's complex sterilisation methods.

- New Patented Latch design allows you to stack trays while keeping them secure.
- Choose from two standard tray heights designed to accommodate a wide variety of instrument sets (mix and match heights to optimise tray storage capacity).
- Add additional trays if the set expands. Only ONE lid needed to cover it all.
- Modular System is compatible with all existing Multipak® accessories.



## StackPak® Full

Approx. Size 250 x 500mm

Cat#	Description	Dimensions** (DxLxW)
5710-03-180P	Full length tray	495x221x43
5710-03-375P	Deep full tray	495x221x91
5710-50-000P	Full length lid	495x229x5

## StackPak® 2/3

Approx. Size 250 x 330mm

Cat#	Description	Dimensions** (DxLxW)
5723-03-180P	2/3 length tray	323x221x43
5723-03-375P	Deep 2/3 length tray	323x221x91
5723-50-000P	2/3 length lid	330x229x5

## StackPak 1/2 Approx. Size 250 x 228mm

Cat#	Description	Dimensions** (DxLxW)
5722-03-180P	1/2 length tray	241x221x43
5722-03-375P	Deep 1/2 length tray	241x221x91
5722-50-000P	1/2 length lid	249x229x5

\*\* All measurements are inside dimensions in mm



# Surgical Instrument Trays (PST)

- Can be customised for individual needs.
- Protects your instruments from costly damage.
- Manufactured with strict quality standards and engineered to last.
- Can be used individually customised to use with wide variety of instruments.
- Unique GridLok™ System allows to use one tray for many applications.
- The raised mat assures proper penetration of sterilising agents between the mat and the tray surface.

These instrument trays can be customised to adapt to a wide variety of individual configurations. The GridLok™ System provides maximum flexibility for custom applications and easy positioning of the Plug'nSert™ silicone insert bars. The Plug'nSert™ silicone bars are designed to be inserted into the tray surface with minimum effort by simply plugging them in. The "pebble-like" interior surface has been designed to raise the mat to assure proper penetration of sterilising agents between the mat and the tray surface. Independent laboratory tests have shown that the space between the mat and the surface is effectively penetrated.



## Large Microsurgeal Instrument Trays

Cat#	Description	Dimensions** (WxLxD)
1500A	Base, Lid & Mat	254x381x25
1520A	Base, Insert Tray, Lid & 2 Mats	254x381x64
1522A	Base (deep), Lid & Mat	254x381x64

## Phaco Trays

Cat#	Description	Dimensions** (WxLxD)
2341A	Base, Lid & 2 Bars / 1 Slot	101x190x38
2343A	Base, Lid & 2 Bars / 3 Slot	101x190x38
2361A	Base, Lid & 2 Bars / 1 Slot	152x254x38
2363A	Base, Lid & 2 Bars / 3 Slot	152x254x38

## Diamond Knife Trays

Cat#	Description	Dimensions** (WxLxD)
2501A	1 Slot – Base, Lid & 2 Bars	64x152x19
2502A	2 Slot – Base, Lid & 2 Bars	64x152x19
2503A	3 Slot – Base, Lid & 2 Bars	64x152x19
2505A	5 Slot – Base, Lid & 2 Bars	102x165x19
2571A	1 Slot – Base, Lid & 2 Bars	64x190x19
2572A	2 Slot – Base, Lid & 2 Bars	64x190x19
2573A	3 Slot – Base, Lid & 2 Bars	64x190x19

\*\* All measurements are inside dimensions in mm

## Mini Trays

Cat#	Description	Dimensions** (WxLxD)
1300A	Base, Lid & Mat	38x68x19
1310A	Base (deep), Lid & Mat	38x68x25
1320A	Base (deep), Lid & Mat	38x68x32

## Microsurgeal Instrument Trays

Cat#	Description	Dimensions** (WxLxD)
2600A	Base, Lid & Mat	64x152x19
2610A	Base, Lid & Mat	64x152x32
2700A	Base, Lid & Mat	64x190x19
4600A	Base, Lid & Mat	102x162x19
4700A	Base, Lid & Mat	101x190x19
4710A	Base, Lid & Mat	101x190x38
6100A	Base, Lid & Mat	152x254x19
6120A	Base, Insert Tray, Lid & 2 Mats	152x254x38
6124A	Base (deep), Lid & Mat	152x254x38

\*\* All measurements are inside dimensions in mm

# Surgical Instrument Trays (PST)



## Scope Trays

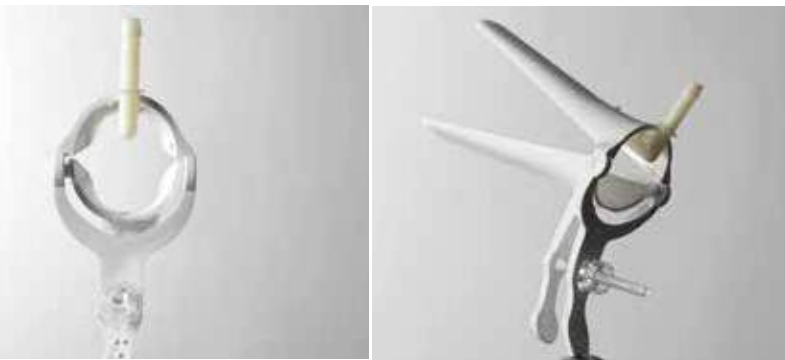
Cat#	Description	Dimensions** (WxLxD)
6510A	Scope Tray - Base, Lid, & Bars	6.6 x 40.6 x 3.8
6511A	Scope Tray - Base & Lid	6.6 x 40.6 x 3.8
6520A	Scope Tray - Base, Lid, & Bars	7.6 x 55.9 x 3.8
6521A	Scope Tray - Base & Lid	7.6 x 55.9 x 3.8
6512A	Scope Tray - Base, Lid, & Mat	6.6 x 40.6 x 3.8
6550A	Scope Tray - Base, Lid, & Bars	16.5 x 45.7 x 3.8
6551A	Scope Tray - Base & Lid	16.5 x 45.7 x 3.8
6552A	Scope Tray - Base, Lid, & Mat	16.5 x 45.7 x 3.8
6560A	Scope Tray - Base, Lid, & Bars	16.5 x 45.7 x 7.6
6561A	Scope Tray - Base & Lid	16.5 x 45.7 x 7.6
6562A	Scope Tray - Base, Lid, & Mat	16.5 x 45.7 x 7.6

# STERILE SINGLE USE VAGINAL SPECULUM WITH SMOKE EXTRACTOR



- Designed for use with Leetz loop diathermy.
- Colour efficiently reflects light, ensuring maximum visibility for the procedure.
- Improved configuration of holes which removes smoke effectively.
- Proven strength, with Failsafe Points uniquely built into each vaginal speculum.
- Available in 3 sizes- medium, medium long & broad.

● **broad size**      ● **medium long size**      ● **medium size**



Code	Description	Size
● PEL- 400111	Vaginal Speculum with Smoke Extractor	Medium
● PEL- 400112	Vaginal Speculum with Smoke Extractor	Medium/Long
● PEL- 400113	Vaginal Speculum with Smoke Extractor	Broad

## PELISPEC SIMS SPECULUM

The PELIspec Sims Speculum is commonly used for inspection of the vaginal walls and can be used as an alternative to the traditional Cusco design. The design and shape of the PELIspec Sims is characterised by its two right angle bends and differing sized ends.

1. Crystal clear ensuring greater visibility of vaginal wall
2. Mirrors the design of metal equivalent
3. Easy central grip handle
4. Two differing end sizes for ease of use
5. Unique lot number for traceability



Cat#	Description	Pack Size
400131	PELIspec with sims speculum - Medium	20
400132	PELIspec with sims speculum - Medium	3

# SONITA MEDIC MEDICAL SURGICAL SUPPLIES



| [www.sonitamedic.com.au](http://www.sonitamedic.com.au) |

■ EMAIL: [customers@sonitamedic.com.au](mailto:customers@sonitamedic.com.au)

■ PHONE: 1800 SONITA (766 482)

■ MOBILE: 0423 178 332

## SYDNEY :

Suite 242 / 60  
Walker St, North Sydney,  
NSW 2060

## MELBOURNE :

Suite 121 / 358 Clarendon St,  
South Melbourne,  
VIC 3205

## BRISBANE :

524 Old Bay Road  
Burrpengary East,  
QLD 4505

## PERTH :

Suite 76 Ground Floor  
50, St Georges Terrace,  
Perth WA 6000