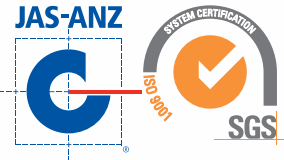


SONITA MEDIC SURGICAL SUPPLIES

STERILISATION CONSUMABLES & ACCESSORIES



Bringing together:

- ✓ Quality
- ✓ Service
- ✓ Experience
- ✓ Knowledge



| www.sonitamedic.com.au |

■ EMAIL: customers@sonitamedic.com.au

■ PHONE: 1800 SONITA (766 482)

■ MOBILE: 0423 178 332

SYDNEY :

Suite 242 / 60
Walker St, North Sydney,
NSW 2060

MELBOURNE :

Suite 121 / 358 Clarendon St,
South Melbourne,
VIC 3205

BRISBANE :

524 Old Bay Road
Burpengary East,
QLD 4505

PERTH

Suite 76 Ground Floor
50, St Georges Terrace,
Perth WA 6000

INSTRUMENT TRAYS- REUSABLE

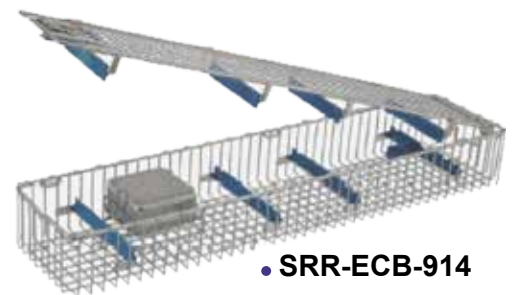


● Instrument Sterilisation Trays

WIRE MESH STERILISATION BASKETS & CONTAINERS



- Designed to help keep tools / instruments organised & protected during sterilisation.
- Mesh structure alleviates concerns for sterilant penetration during sterilisation.



● SRR-ECB-914

● SRR-MMB-701



● SRR-MMB-729



● SRR-ESB-903



● SRR-PWB-401



SONITA MEDIC SURGICAL SUPPLIES

WIRE MESH STERILISATION BASKETS & CONTAINERS



Features stainless steel frame with extra-fine stainless steel mesh that prevents even the smallest items from dropping to the bottom of your ultrasonic. Manufactured with 304 stainless steel, making them compatible with all types of detergents. Smooth, rounded surfaces with no sharp edges to ensure protection of instruments, reduce potential OH&S risks to CSSD personnel and prevent damage of gloves or wraps.



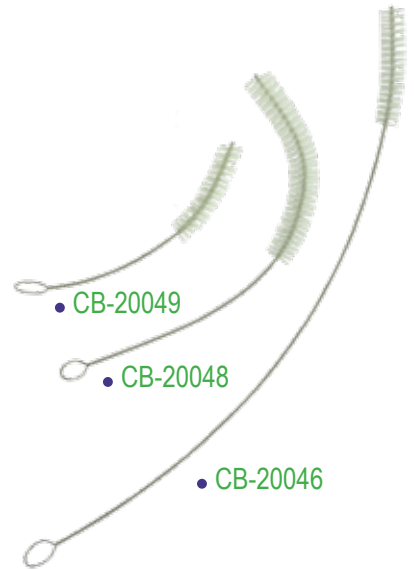
Code	Size
• SRR-SMB-780	40 x 40 x 20 mm
• SRR-SMB-781	80 x 40 x 20 mm
• SRR-SMB-782	70 x 70 x 30 mm
• SRR-SMB-783	80 x 80 x 40 mm
• SRR-SMB-784	90 x 90 x 50 mm
• SRR-SMB-785	160 x 40 x 20 mm
• SRR-SMB-786	200 x 50 x 50 mm
• SRR-SMB-787	200 x 40 x 40 mm
• SRR-SMB-788	80 x 40 x 40 mm
• SRR-SMB-789	150 x 110 x 20 mm
• SRR-SMB-790	310 x 210 x 40 mm

For full range of Wire Mesh Baskets & Containers, please refer to our Wire Mesh & Containers for Sterilisation Catalogue

SONITA MEDIC SURGICAL SUPPLIES

CLEANING BRUSHES - REUSABLE

- Instrument / Tube / Trach Tube Cleaning Brushes
- Pipe Cleaners
- Endoscopic Cleaning Brushes
- Toothbrush- Style Cleaning Brushes



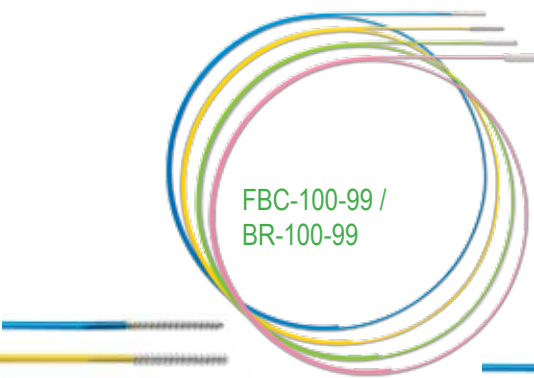
● CB-20049

● CB-20048

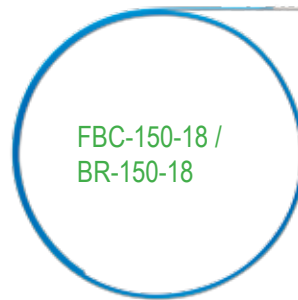
● CB-20046



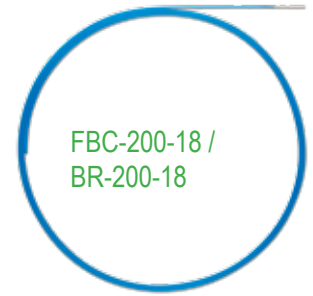
● CB-20032



FBC-100-99 / BR-100-99



FBC-150-18 / BR-150-18

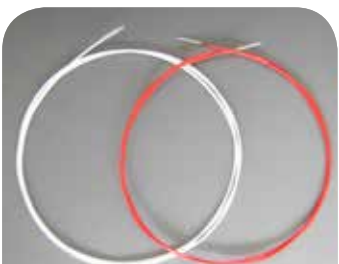


FBC-200-18 / BR-200-18



- FBC-150-18 / BR-150-18
- FBC-150-24 / BR-150-24
- FBC-150-32 / BR-150-32
- FBC-150-42 / BR-150-42

- FBC-200-18 / BR-200-18
- FBC-200-24 / BR-200-24
- FBC-200-32 / BR-200-32
- FBC-200-42 / BR-200-42



FBC3-D02 Endoscope thin tube



FBC3-T01 three brush head



FBC3-D01 Endoscope standard tube



FBC3-V01 Endoscope brush+ valve brush

SINGLE USE CHANNEL CLEANING BRUSH - Tube Coated Anti Kink & Smooth Enhanced



● CHANNEL CLEANING BRUSH



SONITA MEDIC SURGICAL SUPPLIES



● FBC3000-SV02



● FBC3000-DV01



● FBC3000-DV02



● FBC3000-DV03



● BR-3307



● N-3000



● BR-3202



● FB-C5-T004 / CB-20038



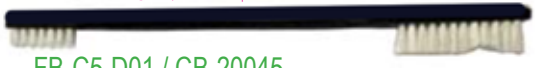
● CB-20074

For cleaning of orthopedic instruments



● CB-20075

For cleaning of orthopedic instruments



● FB-C5-D01 / CB-20045



● FB-C5-D02



● FB-C5-D03



S-2121

- FBC-100C / PC-100C
- FBC-200C / PC-200C
- FBC-300P / PC-300P
- FBC-400P / PC-400P

- FBC-112C / PC-112C
- FBC-212C / PC-212C
- FBC-312P / PC-312P
- FBC-412P / PC-412P



● FB-C5-T001



● FB-C5-T002



● FB-C5-T003 / CB-20043



● D-2100BN



● D-2100SN



● FBC5-KIT

SONITA MEDIC SURGICAL SUPPLIES

IDENTIFICATION TAGS - Printed Locking Tags



Printed Locking Tags:

Versatile, durable & economical. Tamper-resistant. Latex free. Compatible with steam and gas plasma sterilisation. Single use. 25mm long.

IDENTIFICATION TAGS - Locking Tags



Locking Tags:

Versatile, durable & economical. Tamper-resistant. Latex free. Compatible with steam and gas plasma sterilisation. Single use. 25mm long.

IDENTIFICATION TAGS - Indicator Dot Locking Tags



Indicator Dot Locking Tags:

Indicator dots on tags change color to indicate exposure to steam sterilisation (blue dot to black dot). Versatile, durable & economical. Tamper-resistant. Latex free. Single use.

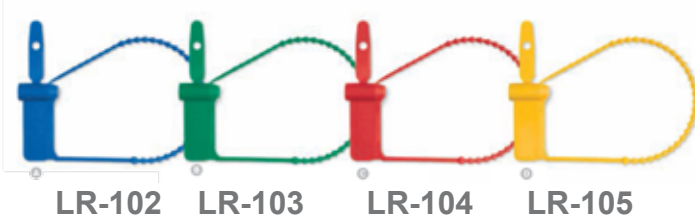
IDENTIFICATION TAGS - Case Locking Tags



Case Locking Tags:

A versatile, durable & economical option for identifying and securing cases and containers. Tamper-resistant. Latex free. Compatible with steam and gas plasma sterilisation.

IDENTIFICATION TAGS - Breakaway Tags



Breakaway Tags:

Versatile, durable & economical. Tamper-resistant. Latex free. Compatible with steam and gas plasma sterilisation. Single use.



****For more product details, please refer to FULL CATALOGUE**

SONITA MEDIC SURGICAL SUPPLIES

IDENTIFICATION TAGS - Write-On Tags

WT-0009



WT-0102



RT-100 kit



WT-0203

WT-0304

RT-200

WT-2614 (Double Sided)

Sieve Tray Tags



- ①: IL-CTAG-26389
- ②: IL-CTAG-26392
- ③: IL-CTAG-26391
- ④: IL-CTAG-26383
- ⑤: IL-CTAG-26385
- ⑥: IL-CTAG-26384
- ⑦: IL-CTAG-26382
- ⑧: IL-CTAG-26386

Smart Tags



ST-0507 ST-0405 ST-0304 ST-0203

Scope Tags



ET-105

ET-106

ET-107

ET-104-1

Metal Tags



MT-0905

MT-0303

MT-0553



IL-MTAG -1995

IL-MTAG -1497



IL-MTAG -1491

Mesh Basket Tags

PTL- MESH BASKET LABELS (90X33mm)



IL-PTL1962

IL-PTL1902

IL-PTL1903

PLASTIC LABELS



IL-PL1948

IL-PL1949

IL-PL1950



IL-PL1969

IL-PL1951

IL-PL1952

Scope Processing Tags

ET-200

EXPIRES ON:

****All other colour & shape options AVAILABLE !!!**

INSTRUMENT PROTECTION CAPS- SINGLE USE



MEDICAL

PHONE:

1800 SONITA (766 482)

MOBILE:

0423 178 332

SONITA MEDIC SURGICAL

EMAIL: customers@sonitamedic.com.au

WEB: www.sonitamedic.com.au

SUPPLIES

OFFICE'S in:

. SYDNEY

. MELBOURNE

. BRISBANE

. PERTH

MEDICAL SONITA MEDIC SURGICAL SUPPLIES

HEAT-SEALING STERILISATION REELS & POUCHES

(FLAT & GUSSETED) - Paper/ Film Low Temperature 121°C & 134°C Sterilisation



• KMNLF-15070



• KMNHG-15070



• KMNGL-050200



• KMNFL-050200

CHEMICAL INDICATOR TAPES & STRIPS

Steam Indicator Tapes



• KMNST-1950

• KMNET-1950

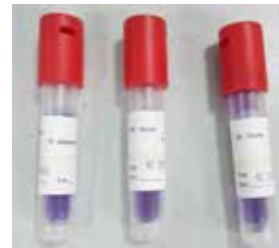


EO Indicator Tapes

EO Indicator Strips



• KMNEC-CLASS6



Steam Biological Indicator

Medicom® STERILISATION POUCHES & REELS

Pride in Protection



SELF-SEALING STERILISATION POUCHES

- Strong Seal
- Medical Grade Paper film
- Wide self-seal adhesive strip
- Perforated Fold
- Thumb Notch
- Indicator



SafeBasic® Flat STERILISATION REELS

- Save time and cost
- Heat sealable.
- Compatible with Steam, EO Gas methods. hyde.
- The sealing temperature in the range of 175°- 200°C.



SAFESEAL® TYVEK Laminate Sterilisation Reels

- Made of Tyvek 2FS Grade sealed on 2 sides
- Length per roll: 100m.



GUSSETED STERILISATION REELS

- Higher storage capacity than flat reel.
- Save time and cost.
- Clean, fibre-free separation of paper and film
- Length per roll: 100m

MEDICAL

■ PHONE:

1800 SONITA (766 482)

■ MOBILE:

0423 178 332

SONITA MEDIC

SURGICAL

■ EMAIL: customers@sonitamedic.com.au

■ WEB: www.sonitamedic.com.au

SUPPLIES

■ OFFICE's in:

• SYDNEY

• MELBOURNE

• BRISBANE

• PERTH

SONITA MEDIC SURGICAL SUPPLIES

CHEMICAL INDICATOR TAPES & STRIPS

Steam Indicator Tapes



- NK-SAT-1950 : 19mm x 50m
- NK-SAT-2550 : 22mm x 50m

• NK-H-1950



Plasma Indicator Tapes

Formaldehyde Indicator Strips

• NK-ST-20



CLASS 4 Steam Indicator Dual Strips

- NK-C-1040 : Dual Strips /
- NK-C-1040SA : Self Adhesive Dual Strips



H₂O₂ Plasma Indicator Strips



• NK-C-1080



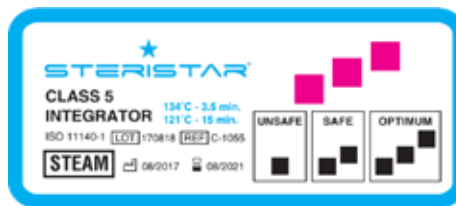
CLASS 6 Emulating Steam Indicator Dual Strips

- NK-C-1035 : Dual Strips /
- NK-C-1035A : Self Adhesive Dual Strips



CLASS 5 Integrator

• NK-C-1055-100



CLASS 5 Steam Integrator

• NK-C-1005-100



Bowie Dick Test Pack



- NK-BD200 : Box of 200 /
- NK-BD400 : Box of 400

3 Lines Handlabeler and Labels

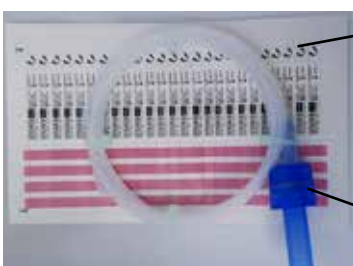


• NK-C-1103

• NK-C-1003

Washer Disinfectant Efficiency Control Test

Helix Test & PCD



• NK-C-1030 : Helix PCD Test

• NK-C-1031 : Helix Tube

• NK-C-1060



• NK-C-1062

• NK-C-1063



• NK-C-1061



MEDICAL

PHONE:

1800 SONITA (766 482)

MOBILE:

0423 178 332

SONITA MEDIC SURGICAL

EMAIL: customers@sonitamedic.com.au

WEB: www.sonitamedic.com.au

SUPPLIES

OFFICE's in:

. SYDNEY

. MELBOURNE

. BRISBANE

. PERTH

SONITA MEDIC SURGICAL SUPPLIES

PLASTIC CONTAINER SECURITY SEALS

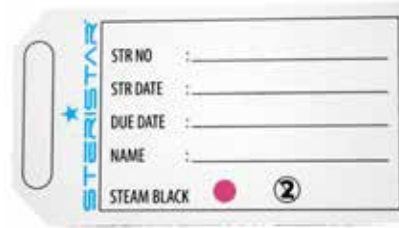
(Plain or With Indicator)



Description	Code	Size	Pack
Plastic Container Security Seals (Plain)	● NK-C-1070 Blue	27 x 50mm	100 pcs/pack 50 pack/ctn
Plastic Container Security Seals (Plain)	● NK-C-1071 Red	27 x 50mm	100 pcs/pack 50 pack/ctn
Plastic Container Security Seals (With Indicator)	● NK-C-1072 Blue	27 x 50mm	100 pcs/pack 50 pack/ctn
Plastic Container Security Seals (With Indicator)	● NK-C-1073 Red	27 x 50mm	100 pcs/pack 50 pack/ctn

SELF ADHESIVE CONTAINER SEALS

CONTAINER LABELS WITH STEAM INDICATOR



Description	Code	Size	Pack (Pcs/Pack)
Self Adhesive Container Seals with Steam Indicator	● NK-C-1074	30 x 140mm	100 pcs/pack
Container Labels with Steam Indicator	● NK-C-1075	67 x 38mm	100 pcs/pack

CONTAINER PAPER FILTERS



- Made of high-quality materials for a variety of rigid container systems.
- Form a reliable germ barrier .
- Two types- round / rectangle.
- Single Use.
- Comply with ISO 11607-1 standards.

Round / Rectangle Container Paper Filters

Description	Code	Size	Pack (Pcs/Pack)
Round Container Filter with Steam Indicator	● NK-C-1077	190mm	100 pcs/pack
Rectangle Container Filter with Steam Indicator	● NK-C-1078	118 x 235mm	100pcs/pack

MEDICAL

PHONE:

1800 SONITA (766 482)

MOBILE:

0423 178 332

SONITA MEDIC

SURGICAL

EMAIL: customers@sonitamedic.com.au

WEB: www.sonitamedic.com.au

SUPPLIES

OFFICE's in:

• SYDNEY

• MELBOURNE

• BRISBANE

• PERTH

Redevelopment Division

WIRE WALL PANEL BASKET SYSTEMS

■ **IG-WB60** Extra Large Wire Basket

■ **IG-WB40** Large Wire Basket

■ **IG-WB20CM** Small Wire Basket

■ **IG-WB30CM** Medium Wire Basket

WIDE MESH & CLOSE MESH AVAILABLE

Nickel Chrome Wire Basket **NC**

- Wire baskets can be sold separately as eaches or in boxes of 5 for the large & boxes of 10 for the smaller baskets.
- Sizes available:
 - **IG-WB20CM**: Small wire basket- L240 x W130 x H125mm (Close Mesh)
 - **IG-WB30CM**: Medium wire basket L250 x W205 x H160mm (Close Mesh)
 - **IG-WB40**: Large wire basket L420 x W270 x H160mm (Wide Mesh)
 - **IG-WB60**: Extra Large wire basket L420 x W420 x H215mm (Wide Mesh)

Nickel Chrome Wire Divider **NC**

- Wire divider for IG-WB30CM
 - **IG-D30**: 245 x 155mm
- Wire divider for IG-WB40
 - **IG-D40**: 245 x 155mm
- Wire divider for IG-WB60
 - **IG-D60**: 425 x 210mm

WIRE CARRY BASKET SYSTEMS

IG-WH-T07 **NC**

Stacking Stand with wheels

- x2 plain x2 brakes



IG-WH-BS16B

Wire Basket with Carry

Handle

NC

- 420 L x 320 W x 200 mm deep



IG-WH-BS18B

Wire Basket with Carry

Handle

NC

- 450 L x 300 W x 210 mm deep



IG-WH-BS14B

Wire Basket with

Carry Handle

NC

- 400 L x 300 W x 200 mm deep

NEW & INNOVATIVE

- Example of customers using our wire carry basket with handle for theatre set ups replacing the non-compliant plastic baskets.



MEDICAL

■ PHONE:

1800 SONITA (766 482)

■ MOBILE:

0423 178 332

SONITA MEDIC

SURGICAL

■ EMAIL: customers@sonitamedic.com.au

■ WEB: www.sonitamedic.com.au

SUPPLIES

■ OFFICE's in:

. SYDNEY

. MELBOURNE

. BRISBANE

. PERTH

MEDICAL SONITA MEDIC SURGICAL SUPPLIES

● Redevelopment Division

WIRE MOBILE & SHELF UNITS



NC SS

IG-5SMU-985 Shelf Unit

- Five Shelf / Mobile
- Size: 460 x 1525 x 1760mm (depth x width x height)

WIRE BASKET TROLLEY

IG-SB5780 Sliding Basket Trolley NC SS

– Double Bay

- Size: 900 x 610 x 1960mm high.
- The Double Bay Basket Trolley places the sliding baskets with narrow side exposed.
- Two bays provide generous storage capacity.
- Illustrated is 16 x 100mm deep baskets and 4 x 200mm deep baskets.
- Other drawer configurations are available.



STAINLESS STEEL BENCH TOP SS

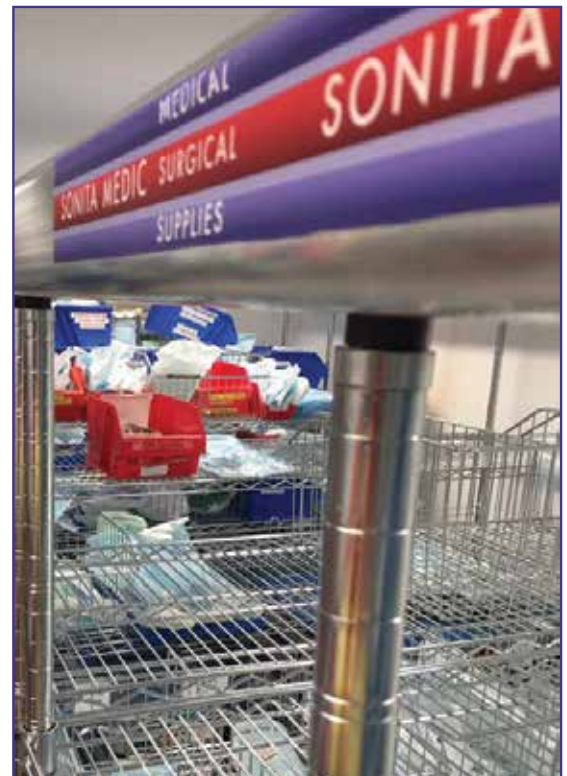


IG-SSB8655 CSSD Bench

- Size illustrated 410 x 1525 x 500mm high
- Designed for change rooms
- Stainless steel bench with bull nose edges.
- One wire mesh shelf under.
- 3 Sizes available

WIRE SHELVING COMPACTOR UNITS

■ Examples of customers using our compactor/ in-line storage solutions



MEDICAL

■ PHONE:

1800 SONITA(766 482)

■ MOBILE:

0423 178 332

SONITA MEDIC SURGICAL

■ EMAIL: customers@sonitamedic.com.au

■ WEB: www.sonitamedic.com.au

SUPPLIES

■ OFFICE's in:

. SYDNEY

. MELBOURNE

. BRISBANE

. PERTH