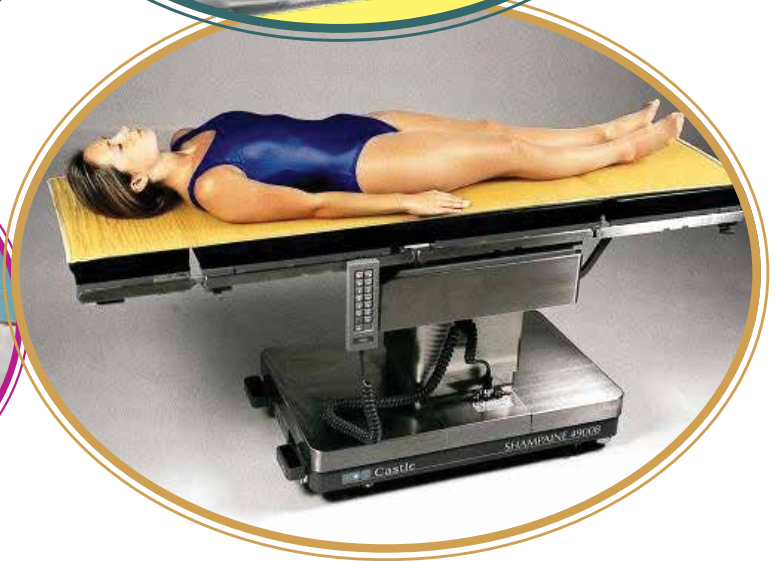


**MEDICAL**  
**SONITA MEDIC SURGICAL**  
**SUPPLIES**

● Anaesthetics Division

# Anaesthetics Solutions



| [www.sonitamedic.com.au](http://www.sonitamedic.com.au) |

■ EMAIL: [customers@sonitamedic.com.au](mailto:customers@sonitamedic.com.au)

■ PHONE: 1800 SONITA (766 482)

■ MOBILE: 0423 178 332

## SYDNEY :

Suite 242 / 60  
Walker St, North Sydney,  
NSW 2060

## MELBOURNE :

Suite 121 / 327 Clarendon St,  
South Melbourne,  
VIC 3205

## BRISBANE :

524 Old Bay Road  
Burpengary East,  
QLD 4505

## PERTH

Suite 76 Ground Floor  
50, St Georges Terrace,  
Perth WA 6000

# E-TUBE HOLDER

## KW01

- ◆ 6mm clear perspex with rounded finished smooth edges.



# TROOP ELEVATION PILLOW

- Improves "Ease of breathing".
- Greatly facilitates mask ventilation.
- Helps align the upper airway axes.
- Facilitates an easier & safer intubation for morbidly obese/ obese & difficult intubation patients.
- Available accessories- elevated arm board pads, disposable covers, disposable head cradles

### ■ Reusable Armboard



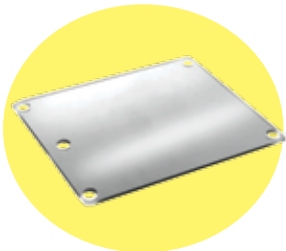
# TROOP



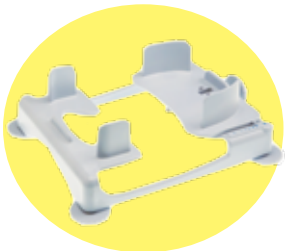
Code	Description	
● <b>MM-TRP-10-91001</b>	<b>SET OF 2-</b> Reusable Vinyl Covered Troop Pillow with Head Cradle	Each
● <b>MM-TRP-10-91006</b>	<b>SET OF 3-</b> Reusable Vinyl Covered TEP Pillow set, includes TEP, TEPA & Head Cradle	Each
● <b>MM-TRP-10-91002</b>	Reusable Vinyl Covered Head Cradle	BX4
● <b>MM-TRP-10-91003</b>	Disposable Covers for Troop Elevation Pillow	BX30
● <b>MM-TRP-10-91007</b>	Reusable Vinyl Covered Arm Boards - pair	BX2
● <b>MM-TRP-96-8815</b>	Disposable Head Cradle - Foam	BX24

- For use in prone position surgeries offering the clinician greater visibility of the patient's face.
- Simple set-up, "no waiting"
- Fully adjustable cushion set accommodates most adult head sizes.
- Greater patient stability.
- Greater visibility of patient's eyes & ET tube.
- The Face-Cradle System consists of a mirror, a base and a soft, contoured foam set.

Code	Description
• <b>MM-100-520-00</b>	Reusable Prone Base and Mirror Set
• <b>MM-100-520-01</b>	Reusable Replacement Prone Mirror
• <b>MM-100-520-02</b>	Reusable Replacement Prone Base
• <b>MM-100-520-03</b>	Single Use Prone Contoured Foam Cushions (2/sets, 5 sets per box)



**Mirror**



**Base**



**Foam Set**

# ACCOSON

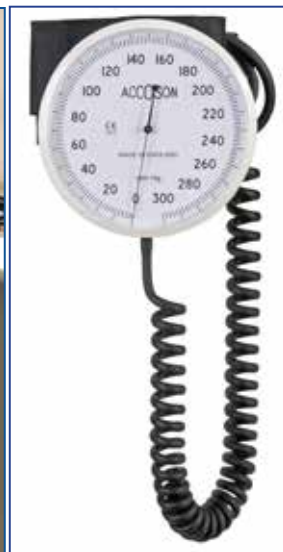
## 6 INCH SPHYGMOMANOMETERS

- Made in UK and guaranteed accurate to ISO 81060-1.
- Large diameter white dial.
- Wall model has swivel mounting bracket.
- Cuff is stored behind the gauge.
- Supplied with latex free inflation system with coiled tubing.

Code	Description
• <b>COS-0342</b>	Wall Model 6 inch Aneroid Sphygmomanometers
• <b>COS-0352</b>	Anaesthetics Model 6 inch Aneroid Sphygmomanometers



• **COS-0352**

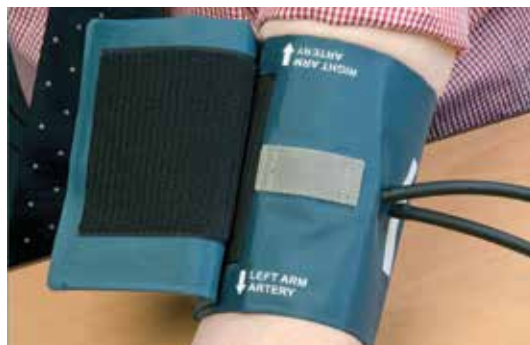


• **COS-0342**



■ **Pressure Infusion Cuff**

- **COS-0205 0.5 litre size**
- **COS-0210 1.0 litre size**



■ **Ambidex one-piece blood pressure cuff - various cuff sizes available**

Cuff Size	Range	Code Single Tube	Code Double Tube
<b>INFANT</b>	13-19mm	COS-1296	COS-1286
<b>CHILD</b>	18-25mm	COS-1294	COS-1284
<b>ADULT</b>	24-35mm	COS-1290	COS-1280
<b>LARGE ADULT</b>	34-46mm	COS-1293	COS-1283
<b>OUTSIDE ADULT/ THIGH</b>	45-60mm	COS-1298	COS-1288



■ **Blood Pressure Cuffs**  
- various cuff sizes available



■ **Six Series Aneroid Sphygmomanometers**  
- Stand Model: COS-0662  
COS-0662A (Adult Ambidex Cuff)  
COS-0662 (Adult Velcro Cuff)

■ **Portable Hand Model Aneroid Sphygmomanometers**

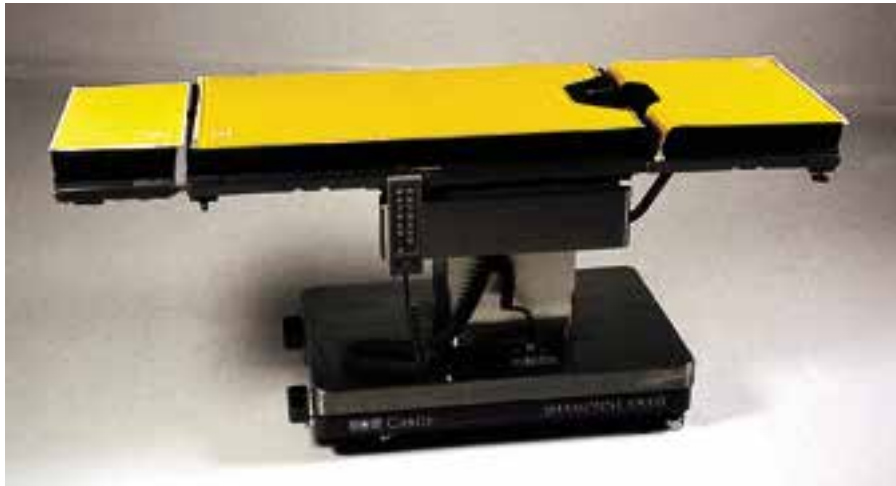


● **Limpet Aneroid Model**



● **Duplex COS-0322**

Code	Description
● <b>COS-0662A</b>	Stand Model 6 series- Aneroid Sphygmomanometers (Adult Ambidex Cuff)
● <b>COS-0662</b>	Stand Model 6 series- Aneroid Sphygmomanometers (Adult Velcro Cuff)
● <b>COS-0205</b>	Pressure Infusion Cuff- 0.5 litre size
● <b>COS-0210</b>	Pressure Infusion Cuff- 1.0 litre size
● <b>COS-0322</b>	Portable Duplex Aneroid Hand Model Sphygmomanometers
● <b>COS-0292A</b>	Portable Limpet Aneroid Hand Model Sphygmomanometers (Straight tube ambidex cuff)
● <b>COS-0302</b>	Portable Limpet Aneroid Hand Model Sphygmomanometers (Coiled tube velcro cuff)
● <b>COS-02925A</b>	Portable Limpet Aneroid Hand Model Sphygmomanometers (With set of four ambidex cuffs)



**Action® O.R.** Standard sizes & customs available

### Overlay, Large- 40101

This table pad is used for a wide range of procedures. It provides end-to-end, even patient weight distribution for open heart and other thoracic and abdominal procedures.

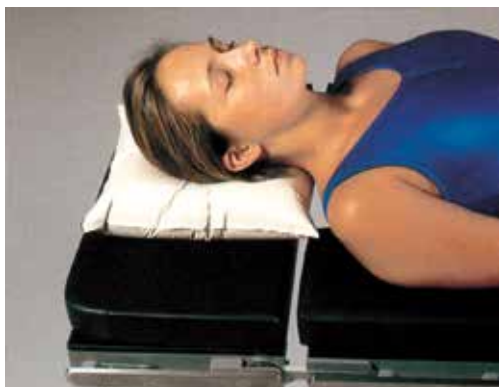
### Overlay, 3-Piece Set- 40104

This set includes head, torso and foot section pads for use with segmented tables. It is ideal for a wide range of procedures to provide complete pressure and shear reduction across entire table surface.

Code	Description	Size
• 40101		183 x 50 x 1.3 cm
• 40104A	Head	50.8 x 22.9 x 1.3 cm
• 40104B	Torso	100.3 x 50.8 x 1.3 cm perineal cutout
• 40104C	Foot	50.8 x 50.8 x 1.3 cm perineal cutout

## HEAD PADS

### Supine Head Pad



This head pad may be used for most supine positions. After placing patient's head in this pad, the centering dish conforms for support and pressure prevention.

- Akton® polymer and foam construction.
- Built-in centering dish conforms for support and pressure prevention

Code	Size
• 40200	23 x 25 x 5.7 cm

### Donut Head Pads



Designed to protect and cradle the patient's head, this pad affords easy access for surgical area of the head and neck. Can be used for a variety of procedures including ENT, plastic, general and ophthalmic.

- Best Seller.
- Variety of sizes for optimum positioning.
- Optional polymer lined dish provides premium protection

Code	Size
• 40201 Adult	20.5 OD x 7.5 ID x 4.5 cm
• 40202 Pediatric	14 OD x 5.7 ID x 3.2 cm

### Horseshoe Head Pads

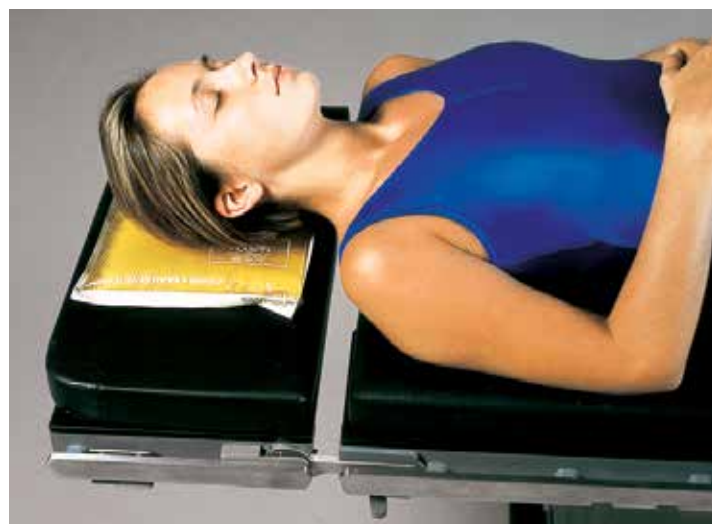


Designed for patients in prone or lateral position. Horseshoe configuration provides clear air passageway and aids anesthesiologist while patients are in lateral or prone position, with head to side.

- For use in prone or lateral positions.

Code	Size
• 40204 Adult	20.5 OD x 7.5 ID x 4.5 cm
• 40211 Adult	20.5 OD x 7.5 ID x 7.5 cm
• 40205 Pediatric	14 OD x 5.7 ID x 3.2 cm
• 40206 Neo-Natal	8.3 OD x 3.8 ID x 2 cm

#### Lateral Head Pad with Center Dish



For lateral surgical procedures. Reduces pressure on patient's side of face and ear. May also be used to achieve desired height alignment of the patient for optimum accessibility to the surgical team.

- Pre & post o.p use.

Code	Size
• 40207	23 x 25 x 2.5 cm

#### Prone Headrests

#### Ophthalmic Cradle Headrests

### POSITIONERS



Designed for patients undergoing procedures while in the prone position.

- Tube access via side or bottom channels.

Code	Size
• 40216M	23 x 25 x 5.7 cm (medium)



Designed originally for cataract surgery. Cradling of patient's head provides stability in addition to easy surgeon/nurse access.

- Reduced risk of alopecia.

Code	Size
• 40217	23 x 23 x 3.8 cm (adult)
• 40217P	19 x 21.6 x 5.7cm (pediatric)

#### Patient Positioners



- Eliminate use of sandbags with this extremely versatile positioner.
- Polymer positioners are a good solution to unsafe rolled towels, IV bags and sandbags.

Code	Size
• 40602 small	25.4 x 11.4 x 5 cm
• 40605 long	35.5 x 11.4 x 5 cm

### ARM PADS



#### Armboard Pad

For use on standard armboard table extensions, to protect the patient's bicep, elbow and forearm areas.

Code	Description	Size
• 40300	Short	38 x 10 x .6cm
• 40301	Long	61 x 11.5 x .95cm

#### Wide Armboard Pad

Increased in width to fit wider armboard tables with extensions.

Code	Description	Size
• 40308	Long	38 x 16.5 x .6 cm
• 40309	Short	61 x 16.5 x .95 cm

## HAND/ WRIST PADS



- Superior hand and wrist stabilization and protection.
- Perfect for Carpal Tunnel, Arterial Cannulization, Dialysis, and other Procedures.
- Ideally positions hand/wrist for harvesting Radial Artery during Coronary Artery Bypass surgery.
- Best used with stretch bandages for stability.

Code	Size
• 40321	28 x 8.3 x 6 cm



# POSITIONING PROTECTION

## CHEST ROLLS



- Stable, no-slip design.
- Protects entire chest area from pressure in prone position.
- Wide range of adult & pediatric sizes to accommodate virtually any need.

Code	Size
• 40616	30.5 x 10 cm (Adult)
• 40617	40.6 x 10 cm (Adult)
• 40639	15 x 10 cm (Pediatric)
• 40640	20 x 10 cm (Pediatric)

## RESURFACING REPAIR KITS



### Kit 002 & Kit 003

- Quick and easy resurfacing of minor cuts or abrasions on any polymer surface.
- Designed for quick and easy resurfacing of small cuts or punctures in any ACTION® Pad.

Code	Size
• Kit 002	10 x 10 cm
• Kit 003	91 x 10 cm

## ANKLE/ KNEE/FOOT/ HEEL PADS

### Knee Crutch Pads



- For use with knee, crutch-type stirrups for urology/OB GYN procedures.
- Can also be used under neath popliteal area in a variety of applications for pediatric procedures.
- 3 sizes for maximum versatility.

Code	Description	Size
• 40402	Small	23 x 23 x 3.8 cm
• 40403	Medium	43 x 27.9 x .6 cm
• 40404	Large	56 x 50 x 1.3 cm

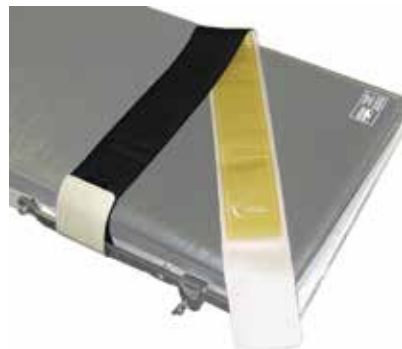
### Heel Support



- Secure and protect heel area without hook-and-loop attachment.

Code	Size
• 40502	18 x 8.3 x 4.5 cm

### Positioning Strap



- Use to minimize patient movement.
- Hook-and-loop attachments connect to rails on tables.
- Akton polymer adhered to black elastomeric band.

Code	Size
• 40713	143.5 x 8.9 .6 cm

MEDICAL

PHONE:

1800 SONITA (766 482)

MOBILE:

0423 178 332

SONITA MEDIC

SURGICAL

EMAIL: customers@sonitamedic.com.au

WEB: www.sonitamedic.com.au

SUPPLIES

OFFICE's in:

. SYDNEY

. MELBOURNE

. BRISBANE

. PERTH

**MEDICAL**  
**SONITA MEDIC SURGICAL**  
**SUPPLIES**

| [www.sonitamedic.com.au](http://www.sonitamedic.com.au) |

■ EMAIL: [customers@sonitamedic.com.au](mailto:customers@sonitamedic.com.au)

■ PHONE: 1800 SONITA (766 482)

■ MOBILE: 0423 178 332

**SYDNEY :**

Suite 242 / 60  
Walker St, North Sydney,  
NSW 2060

**MELBOURNE :**

Suite 10 / 327 Clarendon St,  
South Melbourne,  
VIC 3205

**BRISBANE :**

524 Old Bay Road  
Burrpengary East,  
QLD 4505

**PERTH**

Suite 76 Ground Floor  
50, St Georges Terrace,  
Perth WA 6000