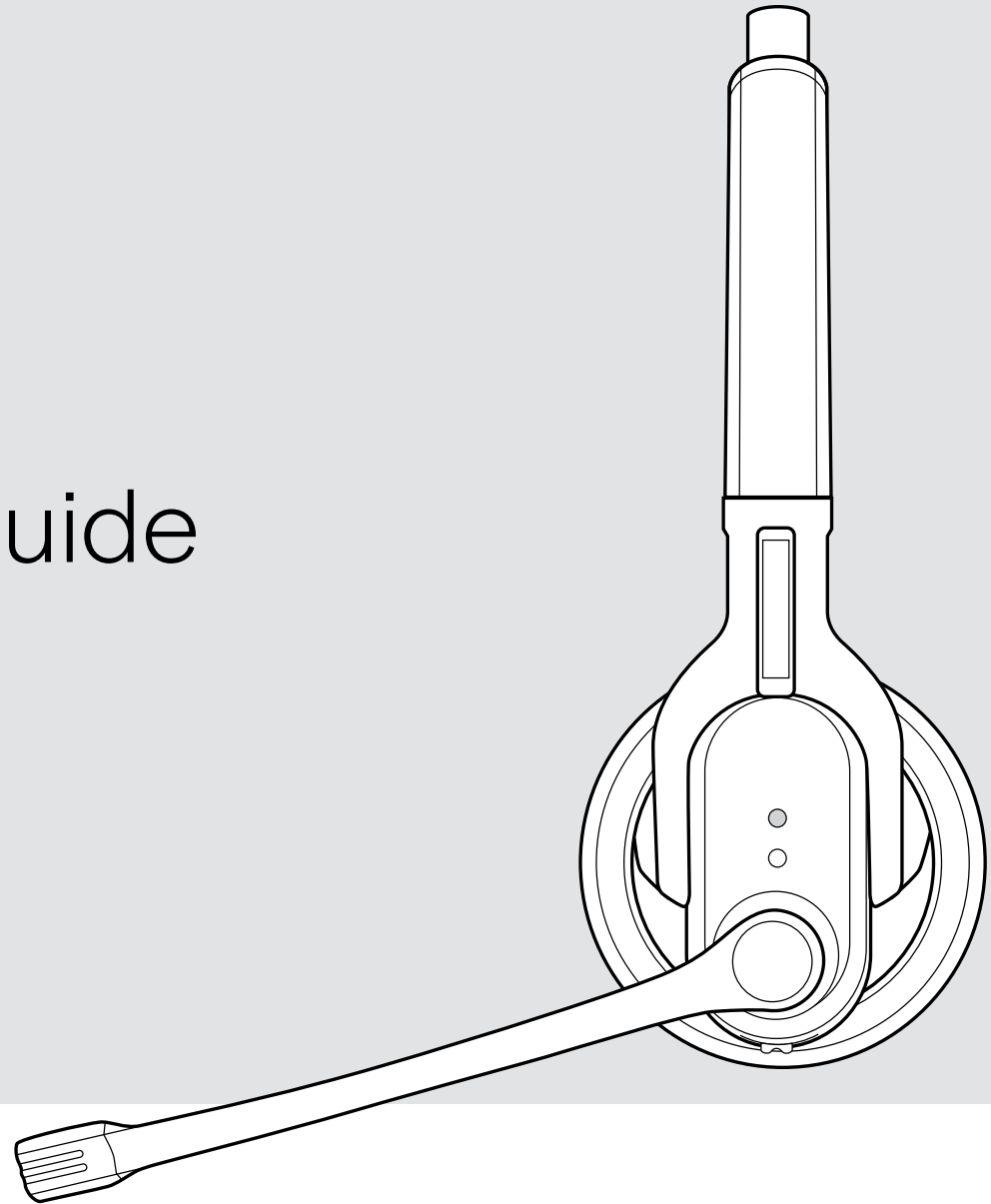


# EPOS

IMPACT SD 20 HS

## Battery Removal Guide



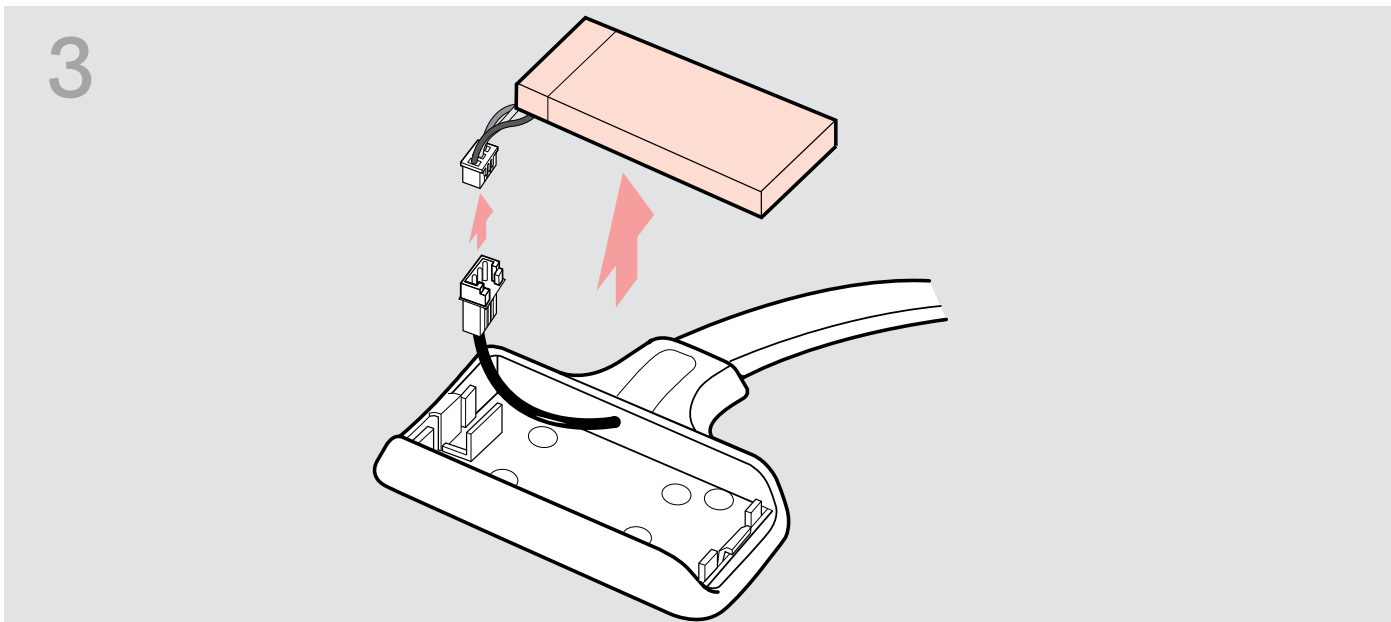
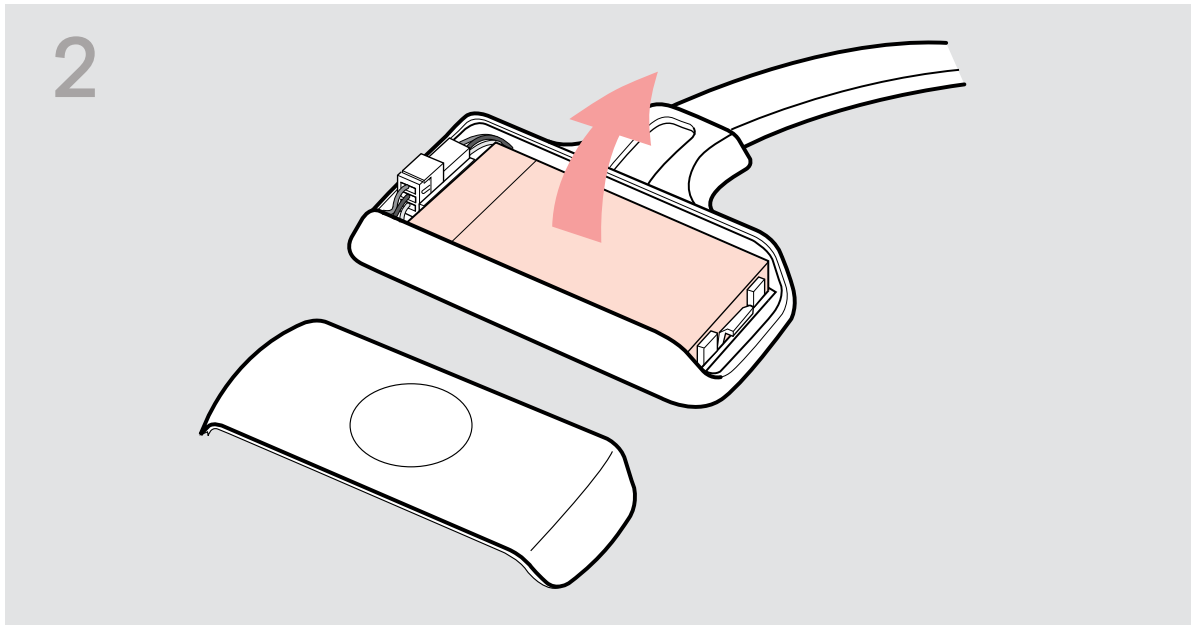
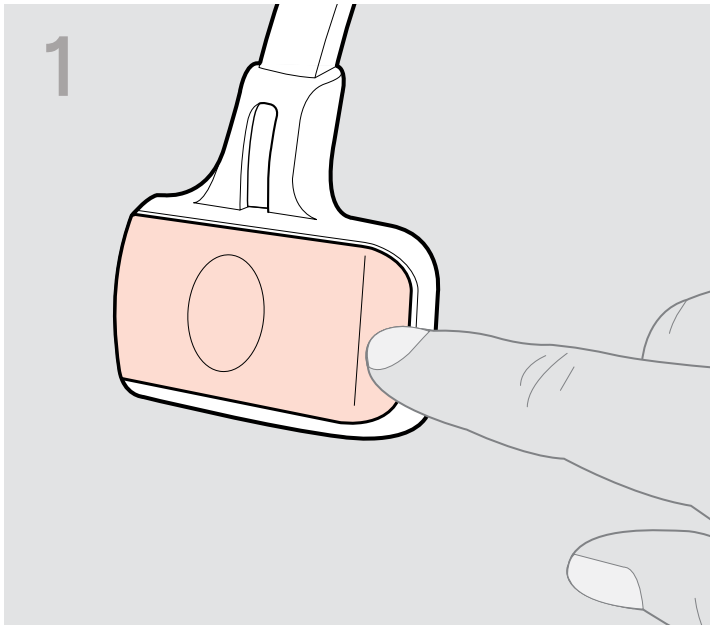
DSEA A/S

Kongebakken 9, DK-2765 Smørum, Denmark  
[www.eposaudio.com](http://www.eposaudio.com)

Publ. 12/21, A01

THE POWER OF AUDIO

# Battery Removal Guide



1. Open the battery compartment cover.
2. Lift the rechargeable battery.
3. Unplug the connector and remove the rechargeable battery.