



Curve Series

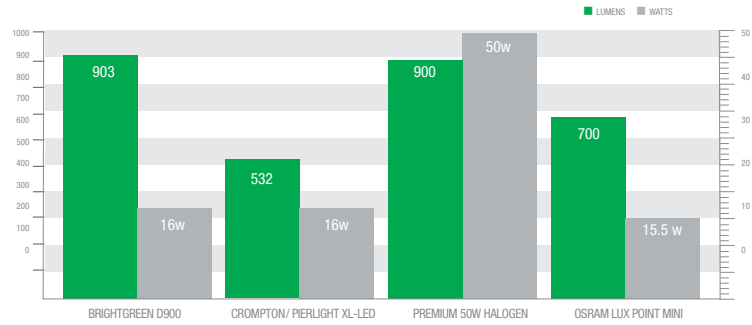


The Brightest

The D900 Curve, along with the other products in Brightgreen's D900 range, is the only LED downlight that can match the total light output and colour rendering of top quality 50W halogen globes.

At 903 lumens the Curve's nearest 16W LED competitor offers only 700 lumens, requiring more energy for each previous watt used.

In fact, the Curve generates more lumens per watt than any of its standard sized competitors.



Long Lasting

The Curve series are designed to last as long as possible and uses long life components that are rated above 100,000 hrs.

The D900 Curve provides a 1.5 year payback period (if used for 9 hours a day) and is guaranteed with a 7 year warranty, a promise no other competitor can match.

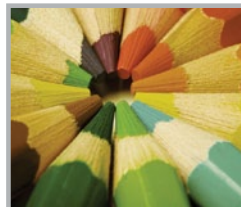
One of Brightgreen's primary endeavours is to circumvent planned obsolescence by designing products that last.



Quality Light

Colour rendering index (CRI) ranks the quality of artificial light relative to the quality of sunlight, which scores 100.

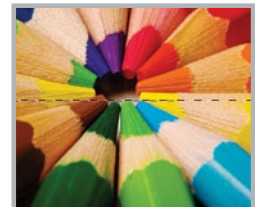
The Curve's light source is comprised of a single chip with multiple wavelengths (colors) of light that are balanced to match the sensitivity of the human eye to colour. This ensures that the colour temperature is consistent and offers a very high CRI (90), allowing interiors and their occupants to look as good as they can.



COMPACT FLUORESCENT
CRI = 51



LED COMPETITORS
CRI = 80



CURVE D900
CRI = 90

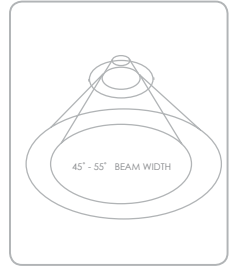
Fast Payback: Seven Year Guarantee

USAGE HRS	1	2	3	4	5	6	7	8	9	10	11	12	13	14	15	16	17	18	19	20	21	22	23	24
YEARS	4 yrs 6 mths	3 yrs 7 mths	2 yrs 11 mths	2 yrs 6 mths	2 yrs 2 mths	1 yrs 11 mths	1 yrs 9 mths	1 yrs 7 mths	1 yrs 5 mths	1 yrs 4 mths	1 yrs 3 mths	1 yrs 2 mths	1 yrs 1 mth	1 yr	11mths	11mths	10 mths	10 mths	9 mths	9 mths	8 mths	8 mths	7 mths	7 mths

This table was calculated for the D900 Cube using the average of peak and off-peak residential electricity tariffs across Australia's states and territories, the RRP of Brightgreen's D900 Cube and the average RRP of a halogen downlight kit of comparable quality.



D900
CURVE

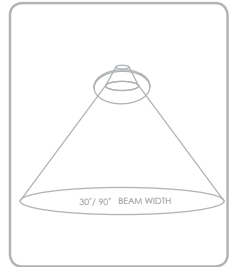


A standard sized LED warm white (3000K) downlight with a circular beam for general illumination purposes. The dimmable D900 Curve is the only LED that matches a 50W halogen on light output and brightness.

Also available, the D1000 Curve is the cool white (5000K) alternative to the D900. It is designed to suit environments that are more work-oriented such as kitchens and offices.



D900
CURVE
90-30



The revolutionary 90/30 degree lens version of the D900 Curve casts a long, oblong shaped beam ideal for lighting hallways, kitchen benches, and for wall washing at a distance.



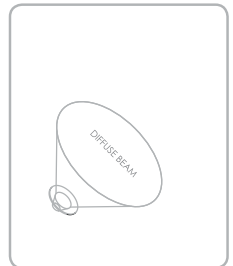
D400
CURVE



The D400 Curve's 36 degree round beam allows for direct lighting of smaller spaces such as alcoves, vanity basins, wall recesses and kitchen benches.



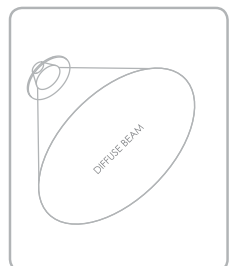
W200
CURVE



The W200 Curve wall light casts a soft, diffuse wash light downwards to achieve high quality, ambient orientation lighting for stairwells, halls and passageways.



W900
CURVE



For indirect lighting applications, the W900 Curve wall light casts a bright, diffuse light upon surfaces such as walls and ceilings, making spaces appear brighter and more spacious.

Curve D900 Installation

RECOMMENDED
MAX. AMBIENT
TEMPERATURE
50°C



USE WITH LEADING EDGE, TRAILING
EDGE OR UNIVERSAL DIMMER
DIMMER
MAX 220V-270V INPUT
3100V SPIKE PROTECTION

BUILT IN JUNCTION BOX WITH
ARTICULATING CAP AND CAPTIVE SCREW

DRIVER MOUNTING POINT HOLED

KEEP OPEN UNLESS FITTED IN THERMALLY CONDUCTIVE
MATERIAL SUCH AS CONCRETE USE RECOMMENDED
CONCRETE CANNISTERS BY APE

CABLE FROM LUMINAIRE TO DRIVER
UP TO 20 METERS

APE
MANUFACTURING

KEEP CLEARANCE OF 20 MILLIMETERS



CIRCULAR CUTOUT (90mm)



Cube Series (Square friends of Curve Series)



D900™
CUBE



D900™
CUBE



D400™
CUBE



W200™
CUBE



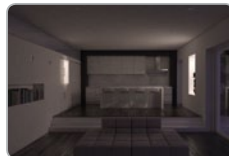
W900™
CUBE



The D900 Cube is a 900 lumen, warm white (3000K) downlight with a patented lens that produces a square shaped light beam. This state of the art design allows for unparalleled levels of control and efficiency in illuminating spaces.



The 90/30 degree lens version of the D900 Cube represents a bold advance in luminaire design. With a rectangular beam 3x longer than it is wide, it is ideal for hallways and other long spaces.



The D400 Cube 36 degree square beam allows for direct lighting of smaller spaces such as alcoves, vanity basins, wall recesses and kitchen bench tops.



The W200 allows a choice between direct and diffuse soft light from the same wall light. It creates quality orientation lighting in your halls, stairwells, vanity basins and toilets.



The W900 is a bright wall light offering superior light quality. It is ideal for indirect lighting of rooms and hallways, with the ability to switch between direct and diffuse beam spread.

✔ Curve Series Benefits and Features



1) Using only 16W to produce over 900 lumens, the D900 Curve is highly eco-efficient.

2) Payback is fast. A full return on your investment can be expected in less than 2 years.

3) The D900 Curve is the brightest standard sized LED downlight in the Australian market. At 903 lumens the nearest on offer is rated at 700 lumens.

4) The D900 will maintain 80% brightness at 70,000 hours and comes with a 7 year warranty.

5) Unlike CFL's, full brightness is achieved from the moment the D900 Curve is switched on.

6) The heat sink averages only 60 degrees, removing the fire risk commonly associated with 50W halogen globes.

7) The patented lens ensures low glare, with little loss of light.

8) A cleaner aesthetic is achieved by using only one chip as a light source.

9) LED lights emit no UV rays, posing no risk to skin or furnishings, unlike halogens and CFL's.

10) With its high CRI (90) products, people and interiors will look as good as they can.

11) It comes as an easy to install integrated fitting, including luminaire and constant current driver.

12) The housing can be easily tilted up to fifteen degrees in order to direct and focus the light.

13) The D900 Curve contains no toxic materials, nor does it produce any as a by-product. This ensures that there is no risk to the environment from mercury, lead or hexavalent

chromium contamination upon disposal.

14) It is easily dismantled by hand for recycling.

15) At the end of its life Brightgreen will buy back the unit for \$2.



How to Quote Curve Series

NAME	CODE	+ BEAM ANGLE	+ FASCIA COLOUR
D900 Curve	BG-CR-D900	-45 or -55	-W or -S
D1000 Curve	BG-CRD1000	-45 or -55	-W or -S
D900 Curve 90/30	BG-CR-D900	-90/30	-W or -S
D400 Curve	BG-CR-D400	-36	-W or -S
W200 Curve	BG-CR-W200	N/A	-W or -S
W900 Curve	BG-CR-W900	N/A	-W or -S



Dimensions for Curve Series

Unit	D900 Curve	D1000 Curve	D900 90/30 Curve	D400 Curve	W200 Curve	W900 Curve
Lumen Rating	903lm	1084lm	901lm	408lm	240lm	912lm
Light Quality (CRI)	90+	90+	90+	90+	90+	90+
Efficacy	56lm/W	67lm/W	56lm/W	58lm/W	64lm/W	57lm/W
Colour Temp.	3000k	5000k	3000k	3000k	3000k	3000k
IP Rating	IP44	IP44	IP44	IP44	N/A	N/A
Wattage	16W	16W	16W	7W	3.7W	16W
Beam Angle	55°/45°	55°/45°	90°-30°	36°	Diffuse	Diffuse
Lifetime (Ta35°)	70,000hrs	70,000hrs	70,000hrs	70,000hrs	70,000hrs	70,000hrs
Input Voltage	220-270V	220-270V	220-270V	220-270V	220-270V	220-270V
Gimble Angle	±15°	±15°	±15°	±15°	n/a	n/a
Ambient Temp.	-28 to 70°	-28 to 70°	-28 to 70°	-28 to 70°	-28 to 70°	-28 to 70°
Operating Temp.	-20 to 85°	-20 to 85°	-20 to 85°	-20 to 85°	-20 to 85°	-20 to 85°
Luminaire Class	IEC 60598- 1:2008	IEC 60598- 1:2008	IEC 60598- 1:2008	IEC 60598- 1:2008	IEC 60598- 1:2008	IEC 60598- 1:2008



Where to find Brightgreen Curve™ series.



www.brightgreen.com

Brightgreen products are designed in Australia and distributed by:



emotiveearth

Emotive Earth Pty Ltd

Phone: 1300 774 267

Email: info@emotiveearth.com.au

Web: www.emotiveearth.com.au